



TABLE OF CONTENTS

Fluence Single Width Pickups	02	Ellipse Matrix Blend Pickup & Preamp System	39
Fluence Classic Humbucker Pickups	03	Ellipse Aura Pickup & Preamp System	40
Fluence Modern Humbucker Pickups	04	Classic Series Mandolin Pickups	42
Fluence 7-String Modern Humbucker Pickups	05	Nashville Series Instrument Pickups	43
Fluence 8-String Modern Humbucker Pickups	06	Classic Series Banjo Pickup	44
Fluence Rechargeable Battery Packs	07	Classic Series Resophonic Pickup	45
Fluence Greg Koch Gristle-Tone™ Signature Pickup Set	10	Full Circle Upright Bass Pickup	46
Fluence Stephen Carpenter Signature Pickup Set	11	BP-100 Upright Bass Pickup	47
Fluence Devin Townsend Signature Pickup Set	12	Classic Series String Pickups for Violin, Viola & Cello	48
TriplePlay Wireless MIDI Guitar Controller	14	Concert Series String Pickups for Violin, Viola & Cello	49
TriplePlay FC-1 Controller USB Host & Floor Controller	16	Aura Pro Onboard Preamp System	50
Loudbox Mini Acoustic Instrument Amplifier	19	Prefix Premium Blend Onboard Preamp System	51
Loudbox Artist Acoustic Instrument Amplifier	20	Prefix Plus-T Onboard Preamp System	52
Loudbox Performer Acoustic Instrument Amplifier	21	Prefix Pro & Prefix Pro Blend Onboard Preamp System	53
SA220 Solo Performance System	22	Presys+ Onboard Preamp System	54
Aura Image Galley III Image Library & Download Tool	24	Powerjack Endpin-Mounted Preamp	55
Aura Spectrum DI Acoustic Imaging & DI	25	SBT Soundboard Transducers	56
Jerry Douglas Signature Series Aura Imaging Pedal	26	Archtop Guitar Pickup	57
Platinum Pro EQ Analog PreAmplification	28	Powerbridge Piezo Bridge Pickups	58
Platinum Stage Analog PreAmplification	29	Powerchip Onboard Mixing Preamp	59
ToneDEQ Acoustic Instrument Preamp with Effects	30	FT-2 Flip-On Tuner for Stringed Instruments	60
Fission Bass Powerchord FX Pedal	31	FT-3 Digital Tuner for Stringed Instruments	61
Matrix Infinity Undersaddle Pickup System	32	Asterope Premium Audio Cables	62
AG-Series Passive Undersaddle Pickups	33		
Blackstack Passive Soundhole Pickup	34		
Neo-D Passive Soundhole Pickups	35		
Neo-Buster Humbucking Soundhole Pickup & Feedback Buster	36		
Rare Earth Active Soundhole Pickups	37		
Rare Earth Blend Active Soundhole Pickup	38		



FISHMAN®

Inspired Performance Technology™

Mission Statement

At Fishman, we believe music has the power to cross cultures and continents, unifying people through the songs in their hearts and the sounds of their instruments.

Around the world and night after night, you'll see and hear Fishman products played by musicians on stages big and small. We are proud to be associated with them all, and to play some small part in their creative process.

Inspired — We love music, and we are continually inspired by musicians to create tools for them that in turn motivate us forward.

Performance — We are always striving to perform at our highest levels, delivering value and quality, and respecting our customers' hard work and investment in our products.

Technology — Since the very beginning, Fishman has been about making intricate technologies workable for musicians, and harnessing these technologies in ways that are functional, affordable, robust and repeatable.

A Letter from the President

Fishman is dedicated to helping musicians of all styles achieve the truest sound possible wherever and whenever they plug in. Our ongoing commitment to professional sound and quality has helped our company grow to become an industry leader in amplification, effects, and pickups for acoustic and electric instruments, MIDI control, and other product categories.

The loyalty from our extended family of players, technicians, repair professionals and instrument manufacturers is really a result of our loyalty toward them. This bond goes beyond product alone, but also extends to our customer service, interaction and support.

After 35 years, you still have my promise that Fishman will always endeavor to be the best at what we do, but most importantly... to make you sound your absolute best.

Thanks to all of you who have chosen Fishman! Have a great gig!



Photo Credit: Ken Susi

Willie Adler
Lamb of God



Joel Stroetzel
Killswitch Engage

"The first show I played using the Fishman pickups - there was a huge difference going in between distorted and clean sound, with just having the ease of a push / pull. You get your loud, clear, rock, metal tone with the active sounds. And the passive sounds are killer for clean tone, nice and shimmery." – Joel Stroetzel

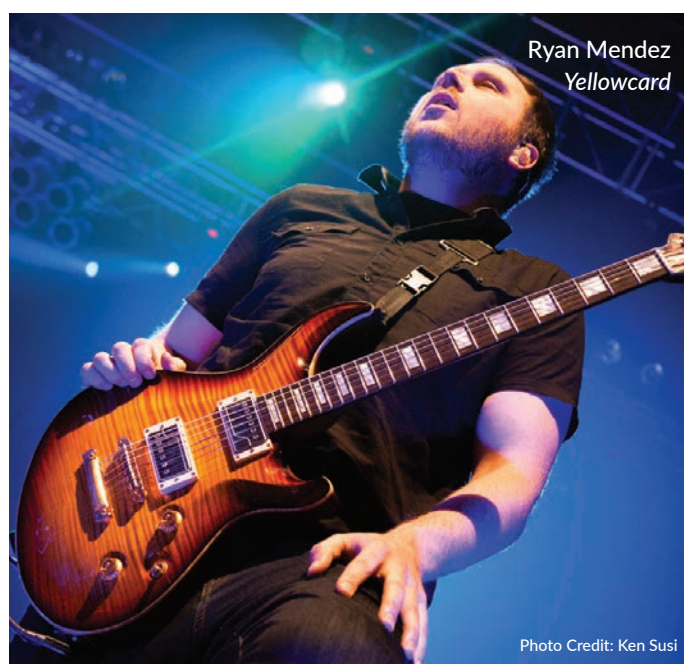


Pat O'Brien
Cannibal Corpse



Gary Hoey

Photo Credit: Bob Steshetz



Ryan Mendez
Yellowcard

Photo Credit: Ken Susi

"Fishman Fluence pickups are a whole new world for electric guitar pickups. The crispness and clarity is incredible and unlike anything I've experienced before. It feels like the guitar plays itself!"

– Ryan Mendez



Cameron Liddell & Ben Bruce
Asking Alexandria

Photo Credit: Ken Susi

Un-wind with **Fluence**® by Fishman

The technology and art of performance infused into electric guitar pickups.

The electric guitar pickup has been wound since 1934. 80 years later, we've unwound it. Original and totally re-imagined, Fishman Fluence pickups are free from the hum, noise and frustrating inductance issues that plague even the most coveted wire-wound pickups — revealing pure, uncorrupted and musical tone.

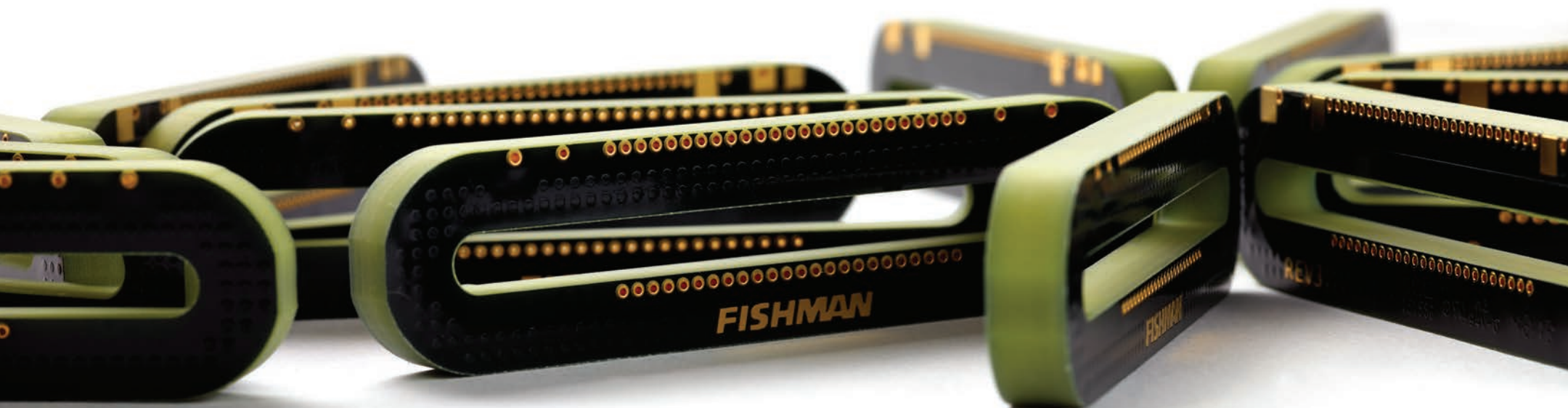
RULE 1

The tones of the great classic and aftermarket pickups are the benchmarks by which all other pickups are judged. These tones and timbres are not negotiable; they are the sound of electric guitars. Period.

RULE 2

With Rule 1 firmly established, we listed the design shortcomings of classic pickups and set about to fix them:

- Fluence pickups are true Multi-Voice. Coil taps and other switching can yield different sounds, but they can't transform your pickups from vintage to hot, or from hot to "line-in" clean... with no losses in output level.
- Fluence pickups are quiet. Traditional single coils hum, and all standard pickups are susceptible to spurious noise — even humbuckers! No sacrifice of classic tone for quiet operation.
- Fluence pickups allow you to own the stage. Long cables? No problem. 20', 30', 50' or more, with no signal degradation.
- Fluence pickups let you control your volume, without sacrificing high end or clarity.
- Fluence pickups will run for days on a standard 9-Volt battery or with the optional rechargeable lithium-ion battery pack.



FISHMAN FLUENCE®



Fluence® Single Width Pickups for Strat®



The most coveted, historical Strat® tones without the hum. From vintage sweetness and clarity to muscular overwound punch, in the same guitar.

Original and totally re-imagined, Fishman Fluence pickups are free from the hum, noise and frustrating inductance issues that plague even the most coveted wire-wound pickups — revealing pure, uncorrupted and musical tone.

Each Fishman Fluence pickup has two distinct and useful sounds onboard. These sounds start with the revolutionary Fluence Core, the heart of Fluence tone. From this Fluence Core we then create the classic timbres and tone — colors you expect from great guitar pickups — as well as some you’ve never expected.

Voice 1: Vintage Single-Coil — Vintage tone, clear and present, seamlessly fused with a sweet warmth.

Voice 2: Hot Texas Single-Coil — Muscular, beefy, “overwound” tone without losing the highs or the “strattiness” we all love.

Fishman Fluence Single Width Pickups:

- Are Multi-Voice. Set and forget, or wire-up to toggle between two musically complimentary voices.
- Drop right in and replace standard single coil pickups.
- Are rechargeable on your guitar. Optional lithium-ion battery pack offers weeks, not hours, of playing time

Strat® is a registered trademark of FMI

SINGLE WIDTH PICKUPS

MODEL NUMBER 1:	Single White — PRF-STR-WH1 Set of 3 White — PRF-STR-WH3
MODEL NUMBER 2:	Single Black — PRF-STR-BK1 Set of 3 Black — PRF-STR-BK3
PEAK FREQUENCY:	Voice 1: 4kHz Voice 2: 3kHz
MAGNETIC MATERIAL:	Alnico IV
MAGNETIC CIRCUIT:	Rod magnets
GAUSS STRENGTH:	260 gauss strength at string
POLE SPACING:	52.2mm
OUTPUT IMPEDANCE:	2k
CURRENT DRAW:	2mA
BATTERY:	9-Volt or optional rechargeable battery
BATTERY LIFE:	Up to 250 hours

OPTIONAL RECHARGEABLE BATTERY PACK

MODEL NUMBERS:	White — PRO-BPK-FSW Black — PRO-BPK-FS1
----------------	----------------------------------------------------------





Fluence®

Classic Humbucker Pickups for Electric Guitar



NECK



BRIDGE

Classic Humbucker Neck

The vintage neck humbucker tone we all love, combined with the up-front dynamics only Fluence can deliver.

Voice 1: Vintage PAF — The ideal, elusive vintage PAF neck humbucker tone with the dynamics and output level you want.

Voice 2: Clear, airy chime — A Fluence-exclusive neck tone, with unreal highs, vocal midrange, and tight lows.

Classic Humbucker Bridge

This pickup features two classic voices: Strong, “calibrated PAF”, and the hot rodded tone that redefined lead guitar — all in the same pickup.

Voice 1: Vintage PAF — The ideal, calibrated vintage PAF bridge humbucker tone at the perfect output level.

Voice 2: Classic Hot Rod — The quintessential hot rodded bridge humbucker tone without all the baggage.

Fluence Classic Humbucker Pickups:

- Are Multi-Voice. Set and forget, or wire-up to toggle between two musically complimentary voices.
- Drop right in and replace standard humbucker pickups.
- Are rechargeable on your guitar. Optional lithium-ion battery pack offers weeks, not hours, of playing time.

CLASSIC HUMBUCKER NECK PICKUPS

MODEL NUMBERS:	Black Nickel — PRF-CHB-NB1 Nickel — PRF-CHB-NN1 Gold — PRF-CHB-NG1 Brushed Stainless — PRF-CHB-NR1
PEAK FREQUENCY:	Voice 1: 2.6kHz Voice 2: 4.5kHz, 350Hz
MAGNETIC MATERIAL:	Alnico V
MAGNETIC CIRCUIT:	Bar magnet with poles
GAUSS STRENGTH:	140 gauss strength at string
POLE SPACING:	49mm
OUTPUT IMPEDANCE:	2k
CURRENT DRAW:	2.5mA
BATTERY:	9-Volt or optional rechargeable battery
BATTERY LIFE:	Up to 200 hours

CLASSIC HUMBUCKER BRIDGE PICKUPS

MODEL NUMBERS:	Black Nickel — PRF-CHB-BB1 Nickel — PRF-CHB-BN1 Gold — PRF-CHB-BG1 Brushed Stainless — PRF-CHB-BR1
PEAK FREQUENCY:	Voice 1: 2.25kHz Voice 2: 1.6kHz
MAGNETIC MATERIAL:	Alnico V
MAGNETIC CIRCUIT:	Bar magnet with poles
GAUSS STRENGTH:	140 gauss strength at string
POLE SPACING:	52.6mm
OUTPUT IMPEDANCE:	2k
CURRENT DRAW:	2.5mA
BATTERY:	9-Volt or optional rechargeable battery
BATTERY LIFE:	Up to 200 hours

CLASSIC HUMBUCKER SET (1 NECK, 1 BRIDGE)

MODEL NUMBERS:	Black Nickel — PRF-CHB-SB2 Nickel — PRF-CHB-SN2 Gold — PRF-CHB-SG2 Brushed Stainless — PRF-CHB-SR2
----------------	-----------------------------------------------------------------------------------------------------------------------------------------

OPTIONAL RECHARGEABLE BATTERY PACK

UNIVERSAL BATTERY PACK:	PRO-BPK-101
LES PAUL® BATTERY PACK:	PRO-BPK-LP1



Fluence®

Modern Humbucker Pickups for Electric Guitar



ALNICO



CERAMIC

Modern Humbucker Alnico

All the musicality, power and explosiveness of alnico. Full chords and fluid solos, plus a voice you've never heard in a humbucker. Great in both positions, or commonly paired with a ceramic bridge pickup.

Voice 1: Modern Active High Output — The ideal active alnico sound. Full, round, and boosted, but with unprecedented articulation and dynamics.

Voice 2: Crisp, clean and fluid — The clean, crisp neck humbucker tone you've always wanted without the thin, plinky sound you don't.

Modern Humbucker Ceramic

Cutting ceramic attack. Brutal active aggression and passive punch in the same guitar. Great in both positions, or commonly paired with alnico neck.

Voice 1: Modern Active High Output — The ideal active ceramic humbucker tone. Crisp, searing crunch, tight bass with no mud, and a growl.

Voice 2: Modern Passive Attack — Organic, high output, passive ceramic tone. Superb distortion characteristics with Fluence dynamics and response.

Fluence Modern Humbucker Pickups:

- Are Multi-Voice. Set and forget, or wire-up to toggle between two musically complimentary voices.
- Drop right in and replace standard humbucker pickups.
- Are rechargeable on your guitar. Optional lithium-ion battery pack offers weeks, not hours, of playing time.

Les Paul® is registered trademark of Gibson Brands, Inc.

MODERN HUMBUCKER ALNICO PICKUPS

MODEL NUMBERS:	Black Plastic — PRF-MHB-AB1 Nickel — PRF-MHB-AN1 Gold — PRF-MHB-AG1 Brushed Stainless — PRF-MHB-AR1
PEAK FREQUENCY:	Voice 1: 630Hz Voice 2: 550Hz / 8kHz
MAGNETIC MATERIAL:	Alnico V
MAGNETIC CIRCUIT:	Bar magnet with blades
GAUSS STRENGTH:	120 Gauss strength at string
OUTPUT IMPEDANCE:	2k
CURRENT DRAW:	2.5mA
BATTERY:	9-Volt or rechargeable battery pack
BATTERY LIFE:	Up to 200 hours

MODERN HUMBUCKER CERAMIC PICKUPS

MODEL NUMBERS:	Black Plastic — PRF-MHB-CB1 Nickel — PRF-MHB-CN1 Gold — PRF-MHB-CG1 Brushed Stainless — PRF-MHB-CR1
PEAK FREQUENCY:	Voice 1: 720Hz Voice 2: 1.8kHz
MAGNETIC MATERIAL:	Ceramic VIII
MAGNETIC CIRCUIT:	Bar magnet with blades
GAUSS STRENGTH:	145 gauss strength at string
OUTPUT IMPEDANCE:	2k
CURRENT DRAW:	2.5mA
BATTERY:	9-Volt or rechargeable battery pack
BATTERY LIFE:	Up to 200 hours

MODERN HUMBUCKER SET (1 ALNICO, 1 CERAMIC)

MODEL NUMBERS:	Black Nickel — PRF-MHB-SB2 Nickel — PRF-MHB-SN2 Gold — PRF-MHB-SG2 Brushed Stainless — PRF-MHB-SR2
----------------	-----------------------------------------------------------------------------------------------------------------------------------------

OPTIONAL RECHARGEABLE BATTERY PACK

UNIVERSAL BATTERY PACK:	PRO-BPK-101
LES PAUL® BATTERY PACK:	PRO-BPK-LP1



Fluence®

7-String Modern Humbucker Pickups for Electric Guitar



ALNICO



CERAMIC



7-String Modern Humbucker Alnico

All the musicality, power and explosiveness of alnico. Full chords and fluid solos, plus a voice you've never heard in a humbucker. Great in both positions, or commonly paired with ceramic bridge.

Voice 1: Modern Active — The ideal active alnico sound. Full, round, and boosted, but with unprecedented articulation and dynamics.

Voice 2: Crisp, clean and fluid — The clean, crisp neck humbucker tone you've always wanted without the thin, plinky sound you don't.

7-String Modern Humbucker Ceramic

Cutting ceramic attack. Brutal active aggression and passive punch in the same guitar. Great in both positions, or commonly paired with alnico neck.

Voice 1: Modern Active High Output — The ideal active ceramic humbucker tone. Crisp, searing crunch, tight bass with no mud, and a growl.

Voice 2: Modern Passive Attack — Organic, high output, passive ceramic tone. Superb distortion characteristics with Fluence dynamics and response.

Fluence 7-String Modern Humbucker Pickups:

- Are Multi-Voice. Set and forget, or wire-up to toggle between two musically complimentary voices.
- Drop right in and replace standard 7-string humbucker pickups.
- Are rechargeable on your guitar. Optional lithium-ion battery pack offers weeks, not hours, of playing time.

7-STRING MODERN HUMBUCKER ALNICO PICKUP

MODEL NUMBERS:	Black Plastic — PRF-MH7-AB1 Nickel — PRF-MH7-AN1 Brushed Stainless — PRF-MH7-AR1
PEAK FREQUENCY:	Voice 1: 630Hz Voice 2: 550Hz / 8kHz
MAGNETIC MATERIAL:	Alnico V
MAGNETIC CIRCUIT:	Bar magnet with blades
GAUSS STRENGTH:	120 gauss strength at string
OUTPUT IMPEDANCE:	2k
CURRENT DRAW:	2.5mA
BATTERY:	9-Volt or optional rechargeable battery
BATTERY LIFE:	Up to 200 hours

7-STRING MODERN HUMBUCKER CERAMIC PICKUP

MODEL NUMBERS:	Black Plastic — PRF-MH7-CB1 Nickel — PRF-MH7-CN1 Brushed Stainless — PRF-MH7-CR1
PEAK FREQUENCY:	Voice 1: 720Hz Voice 2: 1.3kHz
MAGNETIC MATERIAL:	Ceramic VIII
MAGNETIC CIRCUIT:	Bar magnet with blades
GAUSS STRENGTH:	145 gauss strength at string
OUTPUT IMPEDANCE:	2k
CURRENT DRAW:	3mA
BATTERY:	9-Volt or optional rechargeable battery
BATTERY LIFE:	Up to 170 hours

7-STRING MODERN HUMBUCKER SET

MODEL NUMBERS:	Black Plastic — PRF-MH7-SB2 Nickel — PRF-MH7-SN2 Brushed Stainless — PRF-MH7-SR2
----------------	-------------------------------------------------------------------------------------------------------------

OPTIONAL UNIVERSAL RECHARGEABLE BATTERY PACK

UNIVERSAL BATTERY PACK:	PRO-BPK-101
-------------------------	-------------



Fluence®

8-String Modern Humbucker Pickups for Electric Guitar



ALNICO



CERAMIC



8-String Modern Humbucker Alnico

This is the sound you've always wanted from your active alnico pickup. The mids are smooth and great for solos, the highs are crisp and detailed, and the lows are clean and dynamic.

Voice 1: Modern Active — Active alnico sound. Full, round, boosted, with articulation and dynamics.

Voice 2: Crisp, Clean and Fluid — Fluence-exclusive tone, the clean, crisp neck humbucker tone you've always wanted.

8-String Modern Humbucker Ceramic

This is the sound you've always wanted from your active bridge pickup. Cutting highs, punishing midrange, and tight lows. We've heard these claims before, but only Fluence coils and preamp deliver dynamics and transients exceeding even your favorite passive pickups.

Voice 1: Modern Active High Output — Ideal ceramic active tone. Crisp, searing, big yet tight.

Voice 2: Modern Passive Attack — Organic, high output, passive ceramic tone. Superb distortion.

Fluence 8-String Modern Humbucker Pickups:

- Are Multi-Voice. Set and forget, or wire-up to toggle between two musically complimentary voices.
- Drop right in and replace standard 8-string humbucker pickups.
- Are rechargeable on your guitar. Optional lithium-ion battery pack offers weeks, not hours, of playing time.

8-STRING MODERN HUMBUCKER ALNICO PICKUP

MODEL NUMBERS:	Black Plastic — PRF-MH8-AB1
PEAK FREQUENCY:	Voice 1: 630Hz Voice 2: 550Hz / 8kHz
MAGNETIC MATERIAL:	Alnico V
MAGNETIC CIRCUIT:	Bar magnet with blades
GAUSS STRENGTH:	120 gauss strength at string
OUTPUT IMPEDANCE:	2k
CURRENT DRAW:	2.5mA
BATTERY:	9-Volt or optional rechargeable battery
BATTERY LIFE:	Up to 200 hours

8-STRING MODERN HUMBUCKER CERAMIC PICKUP

MODEL NUMBERS:	Black Plastic — PRF-MH8-CB1
PEAK FREQUENCY:	Voice 1: 720Hz Voice 2: 1.3kHz
MAGNETIC MATERIAL:	Ceramic VIII
MAGNETIC CIRCUIT:	Bar magnet with blades
GAUSS STRENGTH:	145 gauss strength at string
OUTPUT IMPEDANCE:	2k
CURRENT DRAW:	3mA
BATTERY:	9-Volt or optional rechargeable battery
BATTERY LIFE:	Up to 170 hours

8-STRING MODERN HUMBUCKER SET

MODEL NUMBERS:	Black Plastic — PRF-MH8-SB2
----------------	-----------------------------

OPTIONAL UNIVERSAL RECHARGEABLE BATTERY PACK

UNIVERSAL BATTERY PACK:	PRO-BPK-101
-------------------------	-------------



Fluence® Rechargeable Battery Packs



Save Money & Save the Planet – Never change batteries again.

Fluence rechargeable battery packs are available in three different styles.

Direct-fit replacements for the back/vibrato cover on a Strat® or the control cavity cover on Les Paul® model guitars, and a universal solution that can be fitted to most any cover, pickguard, control plate or similar metal or plastic part.

The ideal power solution for Fishman Fluence pickups, these lithium-ion packs require no modification of your guitar, and can also be used to power other on-board 9-Volt pickups and accessories. Featuring a current capacity similar to a premium 9-Volt alkaline battery, recharging is done via a standard mini-USB cable. The charger and the cable are included in the box.

LED indicators let you know when the battery pack is “full” and when it's time to recharge. Complete recharge time from “empty” is 3 hours or less, and a full charge offers weeks, not hours, of playing time between charges (depending on load).

Fluence Rechargeable Battery Packs include:

- Connection wire
- USB cable
- Micro-USB cable

Strat® is a registered trademark of FMI
Les Paul® is registered trademark of Gibson Brands, Inc.

SINGLE WIDTH RECHARGEABLE BATTERY PACK

MODEL NUMBERS:	Black US SKU: PRO-BPK-FS1 Black EU SKU: PRO-BPK-FX1 White US SKU: PRO-BPK-FSW White EU SKU: PRO-BPK-FXW
DIMENSIONS:	5.68" H x 3.54" W x .23" D (144mm) x (90mm) x (5.85mm)
WEIGHT:	2.8oz. (2.26g)
BATTERY LIFE:	Up to 250 hours

LES PAUL® RECHARGEABLE BATTERY PACK

MODEL NUMBERS:	US SKU: PRO-BPK-LP1 EU SKU: PRO-BPK-LX1
DIMENSIONS:	5.152" H x 3.64" W x .427" D (130mm) x (92mm) x (10.8mm)
WEIGHT:	.15lbs (2.4oz)
BATTERY LIFE:	Up to 200 hours

UNIVERSAL RECHARGEABLE BATTERY PACK

MODEL NUMBERS:	US SKU: PRO-BPK-101 EU SKU: PRO-BPK-EU1
DIMENSIONS:	1.5" H x 1.74" W x .43" D (38.1mm) x (44.3mm) x (10.9mm)
MOUNTING HOLE:	Requires drilling a ½" (12.7mm) mounting hole
WEIGHT:	.1lbs (1.6oz)
BATTERY LIFE:	Up to 200 hours



FISHMAN *Signature Series*

IN 2014 FISHMAN INTRODUCED FLUENCE MULTI-VOICE PICKUPS, CHALLENGING THE ARCHETYPE THAT HAD EXISTED FOR OVER 80 YEARS. FLUENCE TECHNOLOGY CAST OFF THE COMMON KNOWLEDGE OF WHAT PICKUPS WERE, HOW THEY WERE MADE, HOW THEY COULD SOUND AND HOW THEY OPERATED.

TODAY, SOME OF THE WORLD'S MOST EXPRESSIVE, CREATIVE AND DARING PLAYERS HAVE JOINED THE FLUENCE REVOLUTION, CHOOSING FLUENCE AS THE VOICE FOR THEIR ELECTRIC GUITARS.



"For me the dream Multi-Voice scenario is to be able to instantly summon the perfect White-Guard and Black-Guard tones with flawless articulation and no hum. And that's exactly what Fishman has done for me in my signature set. The voices in my head are now in my guitar – well, four of them anyway!" – **Greg Koch**

Greg Koch



"I was never the super-critical guy. I'm not much for specs, but I like clean, full sounding pickups. We put Fluence in and I jammed on them for 45 minutes and thought... 'these things are freaking great...' I didn't want to stop playing." – **Stephen Carpenter**

A stylized white signature of Stephen Carpenter, featuring a large, bold, and somewhat abstract script.



"'Transcendence' is the name of my new album and it's also the thematic inspiration for my signature pickups. The goal was to merge two opposite ends of the sonic spectrum into one product and I'm proud to say we have strongly achieved that." – **Devin Townsend**

A stylized white signature of Devin Townsend, featuring a large, bold, and somewhat abstract script.



Fluence®

Greg Koch Gristle-Tone™ Signature Pickup Set



RHYTHM PICKUP



TREBLE PICKUP



JACK CUP CHARGING
MODULE



CONTROL PLATE
ASSEMBLY

Known for doing things to a guitar that the roughest ranch hand wouldn't do to a farm animal, the moniker "Gristleman" comes from the term "pounding the gristle" which refers to the act of engaging in fierce musical congress.

Greg achieved world renown when his maniacal guitar compilation "The Grip" was released on Steve Vai's Favored Nations Label in 2001. As a leader of various bands bearing his name, Greg has toured the world bringing the "Gristle" to the people.

The Greg Koch Gristle-Tone™ Signature Pickup Set features:

- 1 lead and 1 rhythm direct replacement pickups for Telecaster® guitars
- Completely assembled, pre-wired, drop-in control plate that includes:
 - 3-way switch
 - Volume and Tone pots
 - Push-push Voice Selector button
 - Fluence rechargeable lithium-ion battery pack
- Replacement "jack cup" with ¼" audio and USB charging jacks
- Installs without permanent modifications*
- Hum-free, Fluence Multi-Voice tone

Voice 1: White-Guard. Open and airy, the sound of Nashville and Bakersfield, chicken pickin', and the big strum.

Voice 2: Black-Guard. Fat & punchy, searing sustain. Undeniable Tele® muscle.

Middle/Both position accurately reproduces the shift in resonance that occurs when using two passive pickups in parallel, compared to either Neck or Bridge pickup by itself.

*Fits most American and Mexican-made Fender Telecaster® guitars without any modifications. In some instances, the guitar may require a slight deepening of a section of the control cavity or other "clean up."

Knobs and switch tips not included.

Telecaster® and Tele® are registered trademarks of FMI

GREG KOCH GRISTLE-TONE SIGNATURE PICKUP SET

MODEL NUMBER:	PRF-TEL-GK1
RHYTHM PICKUP PEAK FREQUENCY:	Voice 1: White-Guard: 3.2kHz Voice 2: Black-Guard: 2.6kHz
MAGNETIC MATERIAL:	Alnico V
MAGNETIC CIRCUIT:	Rod magnets
GAUSS STRENGTH:	260 gauss strength at string
POLE SPACING:	50.7mm
OUTPUT IMPEDANCE:	2k
CURRENT DRAW:	2mA
TREBLE PICKUP PEAK FREQUENCY:	Voice 1: White-Guard: 3.2kHz Voice 2: Black-Guard: 2.6kHz
MAGNETIC MATERIAL:	Alnico IV
MAGNETIC CIRCUIT:	Rod magnets
GAUSS STRENGTH:	260 gauss strength at string
POLE SPACING:	55.4mm
OUTPUT IMPEDANCE:	2k
CURRENT DRAW:	2mA
MIDDLE/BOTH PEAK FREQUENCY:	Voice 1: White-Guard: 4.5kHz Voice 2: Black-Guard: 3.5kHz
RECHARGEABLE BATTERY INCLUDED	
BATTERY LIFE:	250 hours



"I'm happier than a Sasquatch in heat during 'Sasquatch Week' with my Fluence pickups. They are the answer to my tonal dreams. They sound so good, it's almost hard to believe."

– Greg Koch



Fluence®

Stephen Carpenter Signature Pickup Set for 7-String & 8-String



7-STRING



8-STRING

Stephen is a player's player, preferring to concentrate more on his music than equipment. "I was never the super-critical guy, I'm not much for specs, but I like clean, full sounding pickups. When I was first starting out, I was using a passive, overwound humbucker. And in 2000, when I started playing 7-string, I used the actives that most people used at the time because they worked fine. Simple as that."

"I was introduced to Fluence by my guitar tech and I'm like, 'I have been offered my own models multiple times and they never really came to fruition,' but we put Fluence in and I jammed on them for 45 minutes and thought... 'these things are freaking great.' I didn't want to stop playing. Playing Voice 2 was like going back to my original overwound passives, which ironically are some of the same pickups that were used in creating the sounds for the Fluence."

Like all Fluence pickups, Stef's signature set is Multi-Voice. "My signature pickup set has the full range of tones that you're looking for. Voice 1 is similar to the tone of the original Modern Humbucker Fluence set. And for the second voice, I like a bit more heat, some hot stuff on it... more edge, so that's in there too."

Stephen Carpenter Signature Pickup Set features:

- 1 ceramic pickup (bridge position), 1 alnico pickup (neck or middle position)
- All components required to achieve Stephen's wiring scheme (minus pickup selector)
 - Volume and Tone pots
 - Push-pull Voice Selector pot for use in Volume or Tone position
 - All wiring required for installation
- Installs without permanent modification
- Hum-free, Fluence Multi-Voice tone

Voice 1: "Like the original Modern Fluence sound that I love, but tweaked a bit in the midrange."

Voice 2: "This is my custom voicing with some tone and gain tweaks to give it that extra heat and edge."

STEPHEN CARPENTER SIGNATURE PICKUP SET

MODEL NUMBERS:	7-String Set: PRF-MS7-SC1 8-String Set: PRF-MS8-SC1
NECK ALNICO	
PEAK FREQUENCY:	Voice 1: 630Hz Voice 2: 550Hz/8kHz
MAGNETIC MATERIAL:	Alnico V
MAGNETIC CIRCUIT:	Bar magnets with blades
GAUSS STRENGTH:	120 gauss strength at string
OUTPUT IMPEDANCE:	2k
CURRENT DRAW:	2.5mA
BRIDGE CERAMIC	
PEAK FREQUENCY:	Voice 1: 750Hz Voice 2: 1.4kHz
MAGNETIC MATERIAL:	Ceramic VIII
MAGNETIC CIRCUIT:	Bar magnets with blades
GAUSS STRENGTH:	145 gauss strength at string
OUTPUT IMPEDANCE:	2k
CURRENT DRAW:	3mA
BATTERY LIFE:	Up to 90 hours



Photo Credit: Ken Susi

"All this and an awesome glow-in-the-dark stripe. You gotta love that!"

– Stephen Carpenter



Fluence®

Devin Townsend Signature Pickup Set



BRIDGE



NECK

Devin Townsend describes himself as “a human being who's trying to make a better version of himself, with the by-product of that process being music. Music that seems to come out in as many different emotional ways as life presents. Music that has always had as its aim the ability to transcend.”

“‘Transcendence’ is the name of my new album and it's also the thematic inspiration for my signature pickups. The goal was to merge two opposite ends of the sonic spectrum into one product and I'm proud to say we have strongly achieved that.”

Devin's music covers a lot of ground, both subtle and dynamic. It's about the interaction between two very distinct styles. It can be both very heavy and very gentle.

To create a pickup set that can legitimately straddle these diverse worlds, Devin worked closely with Fishman R&D to build in very specific attributes that sonically react like two entirely different instruments.

Devin Townsend Signature Pickup Set features:

- 1 bridge pickup and 1 neck pickup
- All components required to achieve Devin's wiring scheme* (minus pickup selector)
 - Volume and Tone pots
 - Push-pull Voice Selector pot for use in Volume or Tone position
 - All cables required for installation
- Option to choose single coil or double coil/humbucking modes (complete wiring schematics for all setups included)
- Installs without permanent modification
- Hum-free, Fluence Multi-Voice tone

Voice 1: “My heavy metal voice.” Pole pieces for more “sonic havoc” when compared to blade magnets.

Voice 2: “A low-gain, single coil, passive, sweet-sounding tone which I prefer in single coil mode” that hits amps and compressors “just so.” Creating a both-pickups-on clean tone and overall volume drop that enhances the effect of switching from dirty to clean sounds.

*Devin's own guitars have a 3-way toggle; Position 1 is Voice 1 humbucker, Position 2 is Voice 2 humbucker and Position 3 is Voice 2 single coil.

Devin's signature model Framus guitar features his Fishman Fluence Signature Set.

DEVIN TOWNSEND SIGNATURE PICKUP SET

MODEL NUMBER:	PRF-CSB-DT2
BRIDGE CERAMIC PEAK FREQUENCY:	Voice 1: 830Hz Voice 2: 3.3kHz
MAGNETIC MATERIAL:	Ceramic VIII
MAGNETIC CIRCUIT:	Hybrid
GAUSS STRENGTH:	130 gauss strength at string
POLE SPACING:	52.6mm
OUTPUT IMPEDANCE:	2k
CURRENT DRAW:	2.2mA
NECK CERAMIC PEAK FREQUENCY:	Voice 1: 780kHz Voice 2: 3.3kHz
MAGNETIC MATERIAL:	Ceramic VIII
MAGNETIC CIRCUIT:	Bar magnets with poles
GAUSS STRENGTH:	130 gauss strength at string
POLE SPACING:	49mm
OUTPUT IMPEDANCE:	2k
CURRENT DRAW:	2.2mA
BATTERY LIFE:	Up to 110 hours



“Now, for the first time in my career, what I use in the studio is exactly the same as what I use on stage. It's all the same thing. There's no special guitar that I use at home, no special pickup, same guitar, same pickups... Fishman Fluence.”

– Devin Townsend

Brent Paschke



"For me as a guitar player, the TriplePlay has opened up creative possibilities that I have never had before."

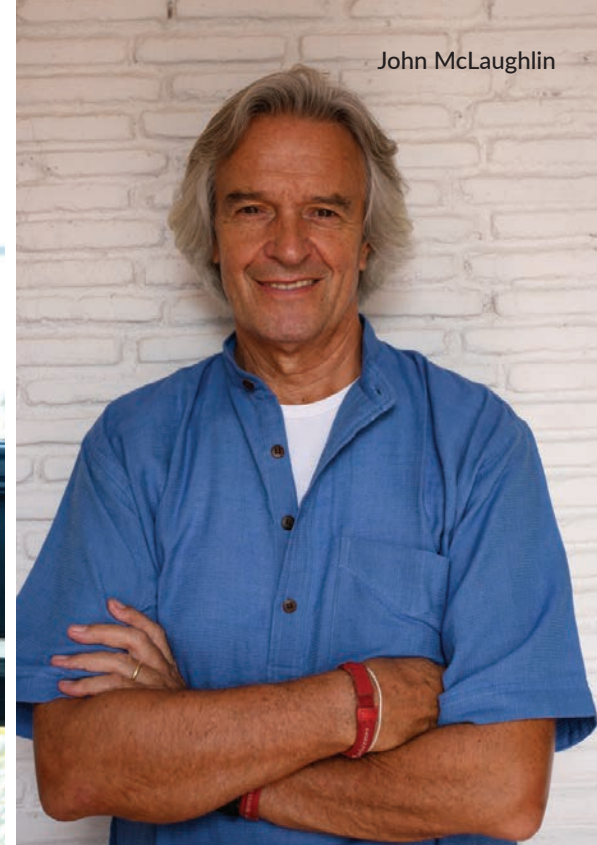
– Brent Paschke, guitarist for Pharrell Williams

James Valentine
Maroon 5



Photo Credit:
Travis Schneider

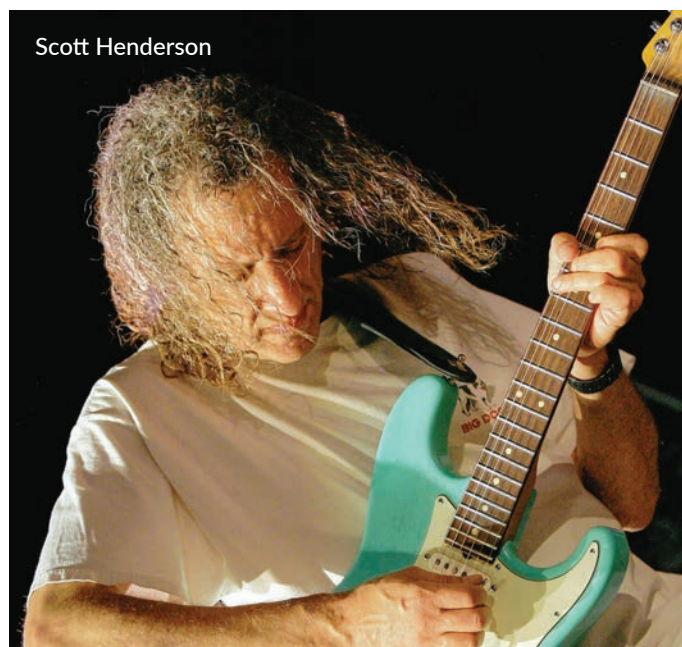
John McLaughlin



Keller Williams



Scott Henderson



"The Fishman TriplePlay is the most accurate guitar to MIDI controller I've ever used. It's so easy to get notes into the computer for writing charts, and it tracks really well so I can use it when composing with MIDI."

– Scott Henderson

Bibi McGill
Beyonce





TriplePlay® Wireless MIDI Guitar Controller



Unlock Your Guitar's Potential!

TriplePlay is the composing, performing and recording system that puts an unlimited palette of instruments and sounds at your fingertips — all with the freedom of wireless control. Compose music with unparalleled tonal options. Easily share arrangements with your band. Switch between instruments, or play up to four instruments at the same time. Teach or learn faster with accurate notation. Create video soundtracks. Mix your own samples, beats, loops and tracks.

Easy to Use. TriplePlay is...

- **Wireless** – No heavy cables to trip over.
- **Rechargeable** – 20 hours of play time per charge.
- **Accessible** – On-board menu navigation buttons make it easy to change settings or instruments during performances.
- **Versatile** – TriplePlay can wirelessly drive any number of virtual instruments, synth modules or samplers.
- **Non-invasive** – TriplePlay can be installed or removed quickly, on virtually any electric guitar, with no permanent installation necessary. Mounting hardware included.

Complete Software Suite Included

The TriplePlay Wireless MIDI Guitar Controller comes complete with all the software you'll need for recording, editing and playing back your music. Take full advantage of powerful MIDI features with your guitar. With the easy and blazingly fast note encoding, preset editor and mixing console, you'll be mixing your own music in no time. Includes full versions of:

- **Native Instruments** – KOMplete Elements and GuitarRig LE
- **Notion Music** – PROGRESSION 2
- **IK Multimedia** – SampleTank 2 XT and AmpliTube Custom Shop
- **PreSonus** – Studio One Artist TriplePlay Edition

WIRELESS MIDI GUITAR CONTROLLER AND PICKUP

MODEL NUMBER:	PRO-TRP-301
MATERIAL:	Durable composite and metal finish
RF RANGE:	100 feet - North American Model only
CONTROLLER DIMENSIONS:	3.25" H x 2.93" W x 0.51" D (82.5mm) x (74.4mm) x (12.95mm)
POWER:	Rechargeable lithium ion battery
BATTERY LIFE:	Over 20 hours
PICKUP DIMENSIONS:	4.11" L x 0.34" W (104.4mm) x (8.6mm)
PICKUP HEIGHT ADJUSTABLE RANGE:	.35" minimum to .58" maximum from tallest point between G and D strings (8.9 mm) to (14.7 mm)

WIRELESS USB RECEIVER

PROCESSOR:	16-bit processing
MATERIAL:	Durable composite
DIMENSIONS:	2.7" H x 0.82" W x 0.36" D (68.6mm) x (20.8mm) x (9.1mm)
POWER:	USB Power

SYSTEM REQUIREMENTS

INTERNET:	Standard broadband connection to download and authenticate software
COMPUTER HARDWARE:	4 GB of RAM and 40 GB free HD space
PLATFORMS:	Windows 7 or 8 both 32bit and 64bit, Apple Mac OS X Snow Leopard 10.6.8 or higher





TriplePlay®

Wireless MIDI Guitar Controller

Perform

TriplePlay is new, it's wireless and it works! Forget what you've experienced in the past with guitar/MIDI control. TriplePlay tracks fast and it's accurate whether operating in Poly or Mono mode. TriplePlay can interface with and control most MIDI hardware synths and virtual instruments, while our Mac® and PC compatible desktop applications offer levels of control that are as deep as you want to go. Desktop performance parameters include fretboard splits – which allow up to four different instruments to be played simultaneously, sustain and looping functions, support for MIDI switches, controllers and more...

Compose

With TriplePlay you can easily enter tab or notation information and then hear your music played back instantly with the sounds of your choice. The included notation software makes it easy to create your own tab, lead sheets, and standard sheet music, complete with an audio track of your work. You can also track and implement changes as your project develops.

Instructors can use TriplePlay to record lesson examples for their students, allowing them to learn faster as they actually hear the parts as they are meant to be played. Key, tempo and other changes are easily made as lessons progress.

Record

With TriplePlay installed, you're in control. Easily and wirelessly build entire arrangements with drums, horns, bass, keys, strings and more... Play along with backing tracks or other recorded media for fun or practice. Create patches and build a library of sounds that's all yours, then summon them at will.

Using TriplePlay to record gives guitarists the power to easily unleash sounds that in the past were only available to keyboard players or required add-ons that were bulky and difficult to install.

Comes complete with:

- Wireless Controller
- Hexaphonic Pickup
- Fast charge power pack
- USB Receiver
- USB charging cable
- Mounting brackets and hardware



"It's a home run..."
– Premier Guitar



Editors' Pick Award
– Guitar Player Magazine



"Tracks like a bloodhound."
– Electronic Musician



Platinum Award for Excellence
– Guitar World Magazine



Best In Show Award
– NAMM Show



"I like that I'm not tied to any one guitar. I can take it on and off as I please. And of course, there's the whole wireless thing. It's so cool that I'm completely unencumbered. Until this technology came along, I'd pretty much given up on triggering synth sounds since my Jeff Beck tours, due to the multiple hassles of the old school technology."

– Jennifer Batten



TriplePlay® FC-1 Controller

USB Host & Floor Controller



Your laptop and everything on it is safe at home. Control your synths and other modules directly with the TriplePlay FC-1 Controller.

The performance power of a computer, with the portability of a mobile device. Does your “music laptop” also have all of your personal information on it? Contacts, banking, credit cards, passwords...Most of us don't have the luxury of a “single-use” music laptop. Or, maybe your music computer is a desktop model, impractical for dragging to gigs.

With the TriplePlay FC-1 Controller, players can use their favorite MIDI synths and sound modules without the need for a computer at the gig. Simply remove the USB receiver from your Mac or PC and insert it into the TriplePlay FC-1 Controller's USB host port. The incoming MIDI data is then passed wirelessly from the guitar to the conventional 5-Pin Din output for use with any MIDI-equipped hardware. Three programmable momentary switches default to patch selection, hold, and tuner access. A large graphic LCD displays the currently loaded hardware synth patch.

The TriplePlay FC-1 Controller comes complete with a software setup utility (Win/Mac) that provides a simple way to reassign footswitch MIDI controllers and expression pedal calibration.

TriplePlay FC-1 Controller features:

- Large, easy-to-read graphic LCD displays Patch name and number
- Built-in tuner
- TriplePlay battery level indication
- 3 programmable foot switches for patch up and down plus hold (sustain)
- Plug and play USB class compliant interface (no driver required)
- 5-Pin Din MIDI In/Out

TRIPLEPLAY FC-1 CONTROLLER	
MODEL NUMBER:	PRO-TRP-FC1
MIDI:	Input, Output
AUDIO:	1/4" Guitar Input and Output (relay-switched)
CONTROLS:	(3) Footswitches (programmable) (1) Expression pedal input (programmable)
USB:	Host for TriplePlay USB Receiver (not included) Micro-USB for computer data
DISPLAY:	192mm x 64mm backlit graphic LCD
MATERIAL:	Durable composite and metal
WEIGHT:	1.35 lbs (0.61kg)
DIMENSIONS:	2.4" H x 9.3" W x 5.4" D (60.5 mm) x (236.7 mm) x (135.9 mm)
POWER:	9-Volt power adapter and USB cable included



James Bay



Derek Jones



Atlas Genius



Al Petteway



"I've been using Fishman products for 25 years. Fishman makes solid, dependable gear that can handle the rigors of the road and get your tone out to your audience. Fishman is an integral part of my sound and they have never let me down."

– Derek Jones, Bassist for the Cirque du Soleil production of KA in Las Vegas

Parmalee



NEEDTOBREATHE



LOUDBOX



The Best Selling Line of Acoustic Amplifiers

Amplification for acoustic instruments. Fishman pickups and preamp systems are acclaimed worldwide for their warm and accurate sound. Over the last 35 years, more than 7 million of them have been installed in acoustic instruments of every conceivable style and kind. Fishman Loudbox amplifiers are created with that same sense of musicality and accuracy. And that's why more players choose Fishman Loudbox amplifiers than any other.





Loudbox Mini

Acoustic Instrument Amplifier



Fishman's lightest and most portable amp yet, the Loudbox Mini delivers the tonal quality that has made the Fishman name the standard for great acoustic sound.

The Loudbox Mini packs 60 watts of clean acoustic power, and has two channels featuring Fishman's legendary preamp and tone control designs. The amp also features digital reverb and chorus for the instrument channel and reverb for the microphone channel. The Loudbox Mini sports an MP3 input and balanced XLR D.I. output, a must for jamming along and capturing your performances.

Loudbox Mini features:

- 60 Watts with Master Volume
- Two channels: Instrument & Microphone
- Digital Reverb and Chorus
- Auxiliary input (1/4" and 1/8")
- D.I. output: Balanced XLR output

Instrument Channel:

- 1/4" input for active or passive pickups
- Feedback-fighting Phase switch
- 3 band EQ: low, mid, high tone controls
- Reverb level
- Dual-function Chorus

Microphone Channel:

- XLR input for dynamic microphones
- 2 band EQ with low and high tone controls
- Reverb level

LOUDBOX MINI	
MODEL NUMBER:	PRO-LBX-500
POWER:	60 watts with Master Volume
DRIVERS:	6.5" woofer 1" soft dome tweeter
SPL:	108dB SPL @ 1 meter
SPEAKER BAFFLE:	10° built-in tilt
DIMENSIONS:	12" H x 13.7" W x 9.7" D (305mm) x (348mm) x (246mm)
WEIGHT:	19.7 lbs (8.9 kg)

ACCESSORIES	
LOUDBOX MINI SLIP COVER:	ACC-LBX-SC5



"We love the Loudbox amps! The sound is so clear, powerful and true. Thanks to Fishman for always having our backs."

– Erik Berry, *Trampled By Turtles*



Loudbox Artist

Acoustic Instrument Amplifier



The Loudbox Artist packs 120 watts of ultra-clean, bi-amplified acoustic power, and enhanced features into an incredibly lightweight and portable package.

The Loudbox Artist features two versatile channels that can each accept an instrument or mic input. Fishman's legendary tone and feedback-fighting controls, plus a dual-effects section, make the Loudbox Artist a great choice for the seriously active musician.

Loudbox Artist features:

- 120 watts of bi-amplified acoustic power
- Two mic/instrument channels accept 1/4" or XLR sources
- Input channels feature 3-band EQ and feedback controls
- Auxiliary stereo input with level control and 1/4" & 1/8" connectors
- Dual digital effects section, with independent channel & effects level
- D.I. output: balanced XLR outputs on each input channel and main mix
- Channel Mute to silence both input channels
- Headphone output
- Foot Switch input for remote muting of Input Channels or Chorus, Flanger, and Slap Echo

Instrument & Microphone Channels:

- Combination 1/4" & XLR input
- Shelving bass and treble
- Resonant-style midrange
- Notch filter (feedback control)
- Input gain with 10dB pad and clip indicator
- 24-Volt phantom power for condenser mics
- Reverb and Delay effects level
- Chorus, Flanger and Slap Echo on/off
- Phase switch (feedback control)
- Dedicated effects loop

LOUDBOX ARTIST

MODEL NUMBER:	PRO-LBX-600
POWER:	120 watts, bi-amped
DRIVERS:	8" woofer (100W) 1" soft dome tweeter (20W)
SPL:	113dB SPL @ 1 meter
SPEAKER BAFFLE:	10° built-in tilt
DIMENSIONS:	13.5" H x 15.5" W x 11.5" D (343mm) x (394mm) x (292mm)
WEIGHT:	25.5 lbs (11.6 kg)

ACCESSORIES

LOUDBOX ARTIST SLIP COVER:	ACC-LBX-SC1
DUAL FOOT SWITCH:	ACC-LBX-FSW



"I've been using my Loudbox just about everywhere I play and I love it. It's easy to carry around, the sound is clean and rich, and it compliments my acoustic styles perfectly."

– Happy Traum



Loudbox Performer

Acoustic Instrument Amplifier



The Loudbox Performer is our most powerful acoustic amplifier, allowing you to be heard in any situation — solo or ensemble.

The Loudbox Performer features 180 watts of transparent bi-amplified acoustic sound and two versatile input channels that accept both 1/4" and XLR sources for instruments and microphones. Each channel includes Fishman's renowned 3-band EQ, feedback-fighting controls, and a new effects section for more tonal options than ever before.

The dedicated midrange control provides enhanced detail and note definition over conventional 2-way designs. An improved, integrated kickstand design allows the Loudbox Performer to be tilted back 50° for better sound projection at short range.

Loudbox Performer features:

- Two mic/instrument channels with 3-band EQ and feedback controls
- Bi-amplified with passive crossover for tweeter and midrange
- Long throw acoustic suspension woofer for clean bass
- 1/4" and 1/8" auxiliary stereo inputs with level control
- Dual digital effects section, with independent channel & effects level
- Reverb, Chorus, Flanger, Delay, Echo and Slap Echo
- Balanced XLR D.I. outputs on each channel and main mix
- Channel Mute to silence both input channels
- Headphone output
- Three-way speaker design with built-in 10° baffle angle
- Integrated, low profile kickstand for a tilt angle of 50°

Instrument & Microphone Channels:

- Combination 1/4" and XLR input with 10dB pad and clip indicator
- Resonant bass and midrange with shelving-style treble control
- Feedback-fighting Phase switch and Notch filter
- Phantom power for condenser mics (24-Volt, high current spec.)
- Reverb / Delay effects level
- Chorus, Flanger and Slap Echo on/off
- Dedicated effects loop

LOUDBOX PERFORMER

MODEL NUMBER:	PRO-LBX-700
POWER:	180 watts, bi-amped
DRIVERS:	1" soft dome tweeter 5" midrange 8" woofer
SPL:	114dB SPL @ 1 meter
SPEAKER BAFFLE:	10° built-in tilt 50° with kickstand
DIMENSIONS:	18.2" H x 15.8" W x 11.5" D (462mm) x (401mm) x (292mm)
WEIGHT:	29.4 lbs (13.3kg)

ACCESSORIES

LOUDBOX PERFORMER SLIP COVER:	ACC-LBX-SC7
DUAL FOOT SWITCH:	ACC-LBX-FSW



"The Loudbox Performer is the most essential piece of equipment that we travel with. We can set up in any venue, large or small, with our own sound crew or with a FOH engineer that we've just met and have complete confidence. That coupled with the fact that the amp is also the best acoustic instrument monitor you could ask for onstage gives us the peace of mind to know that we can take our sound for granted and just concentrate on performance."

– Larry Campbell and Teresa Williams



SA220 Solo Performance System



With the SA220, the performer and audience hear exactly the same sound, meaning there's no need for separate wedge monitors or a combo amp backline. And because the SA220 is voiced for the singer/songwriter, acoustic instruments and vocals are projected with superb depth and clarity.

The Ultimate in Portability

The Fishman SA220 weighs under 25lbs*, ships complete with a padded gig bag equipped with wheels, and includes a rugged speaker stand. Set up takes less than a minute, with only one trip to the car! And full-digital universal power means the SA220 is ready to travel anywhere in the world.

Features Performing Musicians Demand

The portable design of the SA220 features many of the award-winning technical elements of our Loudbox family of amplifiers. In addition, we've added a unique monitor feature designed to revolutionize an acoustic-duo's ability to hear each other on stage. The SA220 is also equipped with two mic/instrument channels, each one featuring high-quality preamps, and 3-band EQ, phantom power, built-in reverb, effects loop, a feedback-fighting notch filter and phase controls.

SA220 Solo Performance System features:

- Two Mic/Instrument channels
- High-quality preamps
- 3-band EQ
- Phantom Power
- Independent Reverb level
- Effect Loop
- Feedback-fighting Phase and Notch filters
- Auxiliary Stereo input with level control
- Four Digital Reverb effects with master level
- Balanced XLR D.I outputs for input channels and main mix
- Unique Monitor I/O for improved onstage ensemble monitoring
- Mute with remote footswitch input
- Tuner output



SA220 SOLO PERFORMANCE SYSTEM

MODEL NUMBER:	PRO-AMP-SL1
POWER:	220 Watts, bi-amped
DRIVERS:	Six 4" mid-woofers, patented dual gap, high excursion design neodymium magnets (200W) One 1" neodymium soft dome tweeter with level control (20W)
COMPACT LINE ARRAY:	Ultra-wide horizontal dispersion and deeper sound penetration
SPL:	115dB SPL @ 1 meter
DRIVER CONFIGURATION:	Vertical Line Array
DIMENSIONS:	41.5" H x 5.6" W x 6.7" D (1054mm) x (142mm) x (170mm)
WEIGHT:	*24lbs (11.4kg) without stand, 43lbs (19.5kg) with carry bag and stand



"The Fishman SA220 is the most versatile, game-changing piece of gear since the invention of the powered speaker. If this sucker existed when I used to cut my teeth doing bar gigs, my life would have been far more profitable, convenient, efficient & sonically (and visually) pleasing to all! I once set it up on whim on a beach for 300 people and the coverage was mind-blowing. The surfers commented they could hear every syllable. I could go on and on, but if you play music for a living, sell your bulky PA and own a Fishman SA220."

- Pat McGee



Imaging – Beyond Modeling.

Fishman Aura® preamps and onboard Imaging systems go beyond modeling to create a spacious sound that is both vivid and natural.

The sound of your acoustic instrument in a room is a combination of time, space and distance. That's why no matter how great your undersaddle pickup or soundhole microphone sounds – and they can sound fantastic – there is still something missing: the instrument's aura. To recreate the sound that naturally surrounds your instrument in a room through an amplifier or PA, we created Aura Imaging Technology.

Using a selection of the most coveted microphones and our Aura algorithms, we developed a library of “Images” that when blended with the pickup sound on your guitar, create a dramatic, natural sound. All Aura products come loaded with a selection of Images.



Frank Turner



Matchbox Twenty

Photo Credit: Randall Slavin



Andy Grammer

Aura® Image Gallery III

Image Library & Download Tool



Now available for Mac® and PC, Aura® Image Gallery III software provides the acoustic musician access to a vast library of Images created from an ever-expanding list of instruments, and provides tools to search and store sets of Images for your Aura Acoustic Imaging pedal or preamp.

The Aura® Image Gallery III currently includes over 1,200 Images recorded from actual instruments with select world-class studio microphones. Users can easily sort and search by make/model, body style or even wood types.

Browse the Image Library to find your instrument using the filters at the top of the main window, then drag and drop an Image into an Image Users can download and store sets of Images to take with them on stage or in the studio.

Aura Image Gallery III features:

- Over 1,200 Images recorded from real instruments
- Select world-class studio microphones from an ever-expanding list of instruments
- Features Image Wizard, an intelligent search engine that finds the best match for your instrument
- Easily sort and search by Make/Model, body style or even wood types
- Access your own Custom Images purchased through the Aura Custom Shop
- Images download directly to a USB-enabled Aura in seconds
- Works with USB-enabled Aura processors sold through retailers including Aura Spectrum DI, Ellipse Aura, and Aura Pro.
- Compatible with a PC running Microsoft® Windows XP® or Windows Vista® or an Intel® Mac® running Leopard® or higher

AURA IMAGE GALLERY III	
SYSTEM REQUIREMENTS:	PC running Microsoft® Windows XP® or Vista® or an Intel® Mac® running Leopard® or higher
PC PROCESSOR:	800+ MHz
AURA COMPATIBILITY:	USB-enabled Aura product
INTERNET CONNECTION:	Required for Image and software updates



"I really needed a solution for acoustic guitars that did not involve using a microphone. I am very happy with the Aura Spectrum DI, as it is the ONLY solution I have found that gives a realistic mic-like sound from an acoustic guitar plugged in direct. The Aura Image Gallery also gives me access to the right Images for 12-string, nylon string, and various other guitars I'm using. Thanks again Fishman!"

– Ben Butler, *session and stage musician*



Aura® Spectrum DI

Acoustic Imaging + D.I.



The complete performance technology solution for acoustic musicians. The Aura Spectrum DI features award-winning Aura® Acoustic Imaging technology that enables players to mix studio-mic'd sound with the signal from their undersaddle or soundhole pickup.

Housed in a professional quality all-metal case, the Aura Spectrum DI features a 3-band EQ, one-knob compressor, automatic feedback suppression with up to 3 notches, a chromatic tuner, effects loop, plus a high-quality balanced XLR D.I. The included Aura Image Gallery software provides access to an ever-expanding list of instrument images recorded using our collection of the most sought after microphones.

Aura Spectrum DI is not only incredibly versatile, but it also delivers the most realistic acoustic sound available for stage or studio. Fishman's Aura Image Gallery software allows users to access images for hundreds of guitar makes and models through our free Aura image library. Once installed on your PC or Mac, the software also allows Aura images to be sorted, managed and grouped. Users can then take advantage of the preamp's open architecture by loading Aura images via a USB cable.

Aura Spectrum DI features:

- Award-winning Aura Acoustic Imaging Technology
- 128 pre-loaded Images for use with the most popular acoustic instruments
- Instrument preamp with balanced XLR D.I. output
- Volume, blend, and Image select controls
- 3-band EQ
- One-knob compressor
- Automatic anti-feedback with up to 3 notches
- Built-in chromatic tuner with bypass/mute
- 16 user-configurable Image locations
- USB interface for Image downloading from Aura Image Gallery (software included)
- Feedback-fighting Phase switch
- Automatic D.I. ground lift

AURA SPECTRUM DI

MODEL NUMBER:	PRO-AUR-SPC
AUDIO I/O:	1/4" mono input & output w/input trim control Balanced XLR D.I. 1/4" effects loop 24-bit A/DA conversion
PROCESSOR:	32-bit processing
MATERIAL:	Durable all-metal construction
DIMENSIONS:	5.6" L x 5.25" W x 2.1" H (142mm) x (133mm) x (53mm)
WEIGHT:	1.7 lbs (.77 kg)
POWER:	9-Volt battery or optional power supply
BATTERY LIFE :	20 hours

OPTIONAL POWER SUPPLY

FISHMAN REGULATED 9-VOLT POWER	ACC-BLE-POW
---------------------------------------	-------------



"I don't know how they do it, but the Aura Spectrum DI brings out the most natural mid-range from any preamp I've come across. Playing acoustics onstage is such a pleasure now! On tour with Keith Urban, I play 6 and 12-string acoustics, mandolin, bouzouki, and 6-string banjos. Now, the sound at front of house is finally what I feel in my hands! Thanks, Fishman!"

– Danny Rader, guitarist for Keith Urban



Jerry Douglas Signature Series Aura Imaging Pedal



Called “Dobro’s matchless contemporary master,” by *The New York Times* and lauded as “my favorite musician” by rock legend John Fogerty, Jerry Douglas could have been a musical innovator on any number of instruments. However, as a teenager, Douglas adopted the then relatively obscure and unexplored Dobro, and that decision has helped him carve out a unique place in American music where he has wielded incalculable influence on bluegrass and its many related genres.

The “JD” Signature pedal comes pre-loaded with 16 custom Aura® Images created by Jerry Douglas himself, specifically for resophonic guitars.

Easy to set up and use, the Jerry Douglas Signature Aura Imaging pedal removes the need to mic your instrument on stage, eliminating spurious stage noise and intrusive microphone setups. With the Jerry Douglas Signature Aura Imaging pedal, you get the true, unique voice of your resophonic instrument, on stage or in the studio.

Jerry Douglas Aura Imaging Pedal features:

- 16 custom Fishman Aura Images created and used by Jerry Douglas specifically for resophonic guitars
- Volume, Blend, and Image Select controls
- Feedback-fighting phase switch
- Bypass/Mute foot switch
- Input Trim with Clip/Low battery indicator
- 24-bit A/D/A, 32-bit internal processing

JERRY DOUGLAS AURA IMAGING PEDAL

MODEL NUMBER:	PRO-AIP-JD1
AUDIO I/O:	1/4" mono input & output w/input trim control 24 bit A/D/A conversion
PROCESSOR:	32-bit processing
MATERIAL:	Durable all-metal construction
DIMENSIONS:	5.6" L x 4" W x 2.1" H (142mm) x (101mm) x (53mm)
WEIGHT:	1.25 lbs (.56 kg)
POWER:	9-Volt battery or optional power supply
BATTERY LIFE:	27 hours

OPTIONAL POWER SUPPLY

FISHMAN REGULATED 9-VOLT POWER	ACC-BLE-POW
-----------------------------------	-------------



“After all these years of fighting microphones and feeling tied to one foot of the stage floor, I really believe we have the answer to every dobro player’s dreams...and still sound like you’re sitting on your back porch.”

– Jerry Douglas

PLATINUM

Analog PreAmplification



The Fishman of Acoustic Preamps

Our new Platinum Pro EQ and Platinum Stage universal preamps are designed for players looking for a pro-quality preamp/DI for their acoustic guitar, violin, cello, bass, resonator guitar, banjo, mandolin or other acoustic instruments that may be too small or too precious to have an onboard preamp.

Class-A analog circuitry makes it a preamp... Great sound makes it a Fishman.

Platinum Series Preamps from Fishman. For over 35 years, the world's #1 maker of acoustic instrument pickups & preamps.

FISHMAN[®]
Inspired Performance Technology[™]



Platinum Pro EQ

Analog PreAmplification



Completely redesigned from the ground up, the all-analog Platinum® Pro EQ universal instrument preamp delivers incredibly accurate sonic detail for any acoustic instrument. A discrete, high-headroom Class-A preamp uses precision, high-speed circuitry for the highest fidelity and low distortion. Classic Fishman tone centers with sweepable mid is combined with a switchable guitar/bass EQ mode, making it more musical for bass instruments and more universal for recording and performing musicians.

The new Platinum Pro EQ integrates critical performance features like adjustable volume boost and a balanced XLR D.I. output housed in a beautiful, road-ready design.

The Platinum Pro EQ is built to be stomped on with durable foot switches that activate the adjustable volume boost or high-contrast chromatic tuner. It also includes a simple and effective analog soft-knee compressor, effects loop and precision sweepable notch filter.

Platinum Pro features:

- 17-Volt, high-headroom, discrete Class-A preamp
- 5-band tone control with sweep-mid & low frequency filter
- EQ mode tailors EQ for bass or most other instruments
- Phase control and precision notch filter reduces feedback
- One-knob adjustable compressor smooths playing dynamics
- Integrated fully-chromatic digital tuner
- Volume boost foot switch with level control (+12 dB)
- Balanced XLR D.I. with pre/post EQ setting and ground lift

PLATINUM PRO EQ

MODEL NUMBER:	PRO-PLT-201
AUDIO I/O:	1/4" Instrument input 1/4" Amp output XLR Balanced D.I. output with Ground Lift switch
TONE SHAPING:	5-band EQ with Sweepable Mid Adjustable Low-cut Filter
FEEDBACK CONTROL:	Sweepable Notch Filter Phase Invert switch
DIMENSIONS:	6.2" x 5.6" x 2.2" 158mm x 143mm x 54mm
POWER:	9-Volt battery (not included) or optional power supply
BATTERY LIFE:	30 hours

OPTIONAL POWER SUPPLY

FISHMAN REGULATED 9-VOLT POWER	ACC-BLE-POW
---------------------------------------	-------------



"You guys knocked it out of the park on this piece of gear! Great instruments deserve to sound great plugged in. Nothing can come close to the natural sound of the Platinum Pro EQ."

– Jimmy Mattingly, fiddle and utility player for Garth Brooks, Reba McEntire, and Dolly Parton



Platinum Stage

Analog PreAmplification



Completely redesigned from the ground up, the all-analog Platinum® Stage universal instrument preamp delivers incredibly accurate sonic detail for any acoustic instrument. A discrete, high-headroom Class-A preamp uses precision, high-speed circuitry for the highest fidelity and low distortion. Classic Fishman tone centers with sweepable mid is combined with a switchable guitar/bass EQ mode, making it more musical for bass instruments, and more universal for recording and performing musicians.

The new Platinum Stage integrates critical performance features like adjustable volume boost and a balanced XLR D.I. output housed in a beautiful, road-ready design.

With an included belt-clip, the Platinum Stage is perfect for mobile instrumentalists, such as mandolin and fiddle players. It can also be powered via 48-volt phantom power, offering complete control over your sound without batteries.

Platinum Stage features:

- 17-Volt, high-headroom, discrete Class-A preamp
- 4-band tone control with sweep-mid & low frequency filter
- EQ mode tailors EQ for bass or most other instruments
- Phase control
- Volume boost switch with level control
- Balanced D.I. with pre/post EQ setting and auto-ground lift
- Belt-clip included

PLATINUM STAGE	
MODEL NUMBER:	PRO-PLT-301
AUDIO I/O:	1/4" Instrument input 1/4" Amp output XLR Balanced D.I. output Auto-Ground Lift
TONE SHAPING:	4-band EQ with sweepable Mid, adjustable Low-Cut filter
FEEDBACK CONTROL:	Phase invert switch
DIMENSIONS:	5.6" x 3.3" x 1.2" 143mm x 85mm x 30mm
POWER:	9-Volt battery (not included) 48-Volt Phantom Optional Fishman power supply
BATTERY LIFE:	70 hours

OPTIONAL POWER SUPPLY	
FISHMAN REGULATED 9-VOLT POWER	ACC-BLE-POW



"My double bass with a Full Circle pickup and a Platinum Stage is just a no brainer. Perfectly balanced and clear as a bell."

– Paul Nowinski, NYC session and touring bassist



ToneDEQ

Acoustic Instrument Preamp with Effects



The ToneDEQ Preamp EQ is a complete performance solution for the acoustic musician. With a high-quality preamp, dual effects section, tone controls, a compressor, level booster and a balanced D.I. — it's got everything you need in one box.

Pure Analog Circuitry

Its analog signal path goes from end to end – from preamp to output – to give acoustic musicians a richer tonal quality. Even the digital effects are mixed in parallel so they don't affect the purity of your acoustic instrument.

Fully Balanced Stage DI

Flexible outputs include a 1/4 inch amplifier output and XLR DI output for the lowest noise possible. Plus the DI features automatic ground-lifting and selectable pre/post EQ settings.

Discrete Class-A Preamp

With Fishman, you get quality discrete Class-A signal conditioning created by the leader in instrument preamp design. The high impedance input is a must for any passive instrument pickup.

Advanced 4-Band EQ

Legendary 4-band equalizer design provides superior tone control for any acoustic instrument. The variable low cut filter controls sub-bass effects produced by some passive pickups.

TONEDEQ	
MODEL NUMBER:	PRO-DEQ-AFX
INPUT:	10M Ohm, discrete class-A JFET design
AUDIO:	All-analog signal path with parallel digital effects
TONE CONTROL:	4-Band EQ with Bass, Middle, Treble, and selectable Low Cut
DUAL EFFECTS:	Reverb (2) or Delay (2), Chorus (2), Flanger or Tremolo
DYNAMICS:	Soft-knee Compressor Boost Footswitch (up to 9dB)
FEEDBACK CONTROL:	Selectable Phase invert
AUDIO I/O:	1/4" mono instrument input 1/4" amplifier output Balanced XLR DI Output with pre/post routing
DIMENSIONS:	5.6" L (142mm) x 9.5"W (241mm) x 2.2" H (55mm)
POWER:	9-Volt battery (not included) or optional Fishman power supply
BATTERY LIFE:	12 hours

OPTIONAL POWER SUPPLY	
FISHMAN REGULATED 9-VOLT POWER	ACC-BLE-POW





Fission Bass Powerchord FX Pedal



Fission Bass Powerchord FX Pedal lets any bassist lay down beds of power by adding stacked harmonies over their bass lines. Through an intuitive set of controls and footswitches, several combinations of octaves, 4th and 5th above the root note, combine to produce powerchords or octave-up effects.

The four footswitch LEDs give you visible indication of the selected harmony. When the effect is off, the LEDs dim, making it easy to set up a harmony before you kick on the chord. It's also a multi-effect pedal with up to 3 voices of harmony, adjustable noise gate, overdrive, tone and effect level. This power-effect combo gives you creative control over anything from subtle octaves, to thick, grinding effects that even your guitar player will envy.

Housed in a lightweight, yet sturdy metal enclosure, Fission Bass uses state-of-the-art 32-bit signal processing and 24-bit audio conversion. Its monophonic input accepts a wide range of pickups. The mix output is perfect for single amp operation and an effect-only output for feeding a dedicated guitar amp.

Fission Bass Powerchord FX Pedal features:

- Creates stacked harmonies above the root note:
 - Octave up
 - 4th and Octave up
 - Octave and 5th up
 - Octave up, 5th up & 2nd octave up
- Unique footswitch LEDs let you 'see' the harmony before you kick it on
- Noise gate control
- Overdrive control
- Tone control
- Effect level control

FISSION BASS POWERCHORD FX PEDAL	
MODEL NUMBER:	PRO-FSN-BAS
AUDIO I/O:	Single 1/4" input with trim control accepts active or passive instruments.
MIX OUTPUT:	1/4"
EFFECT OUTPUT:	1/4"
DIGITAL SIGNAL PATH:	32-bit processing 24 bit A/D/A
MATERIAL:	Durable all-metal construction
DIMENSIONS:	4.7" L x 7.4" W x 2.1" H (119mm) x (188mm) x (53mm)
POWER:	9-Volt battery or optional power supply
BATTERY LIFE:	20 hours

OPTIONAL POWER SUPPLY	
FISHMAN REGULATED 9-VOLT POWER	ACC-BLE-POW



"I love it when the band is playing a power riff together with stacked harmonies, add 5ths & octaves, man, it doesn't get any funkier. Now the next best thing is playing by myself with the Fission Bass Powerchord FX pedal. It makes me feel like I am playing with my band in the upper room standing in the balcony of your mind. Feel the power of the One and check it out today baba!"

– Bootsie Collins



Matrix Infinity Undersaddle Pickup System



The Matrix Infinity pickup and preamp system is the latest version of our flagship Matrix Series and offers clear, transparent tone, dynamic string response and ease of installation. Easily accessible soundhole-mounted Volume and Tone rotary controls allow the player to effortlessly make adjustments to their sound.

Taking the pickup's tonal variation capability one step further, the Matrix Infinity incorporates a switchable voicing feature to accommodate all guitar body sizes and different performance situations in one system. With a long list of enhancements, the Matrix Infinity has literally redefined the category of undersaddle pickup systems.

Matrix Infinity features:

- Completely redesigned active, endpin mounted preamp
- Features the world's best selling undersaddle pickup, the Acoustic Matrix®
- Soundhole mounted rotary controls for Volume & Tone
- Unique Tone control cuts mids while boosting treble and bass
- Integrated LED low battery indicator
- Switchable voicing to accommodate all guitar body sizes and performance situations
- Solderless connections
- Pickup available in wide, narrow, split saddle and ukulele formats
- Suitable for Nylon, 12-String and Bass
- Custom lengths available (special order)
- Professional installation recommended

MATRIX INFINITY	
MODEL NUMBER 1 WIDE FORMAT:	PRO-MAT-INF 1/8" (3.2mm) width
MODEL NUMBER 2 NARROW FORMAT:	PRO-MAN-INF 3/32" (2.3mm) width
MODEL NUMBER 3 SPLIT SADDLE:	PRO-MAL-INF 3/32" (2.3mm) width
MODEL NUMBER 4 UKULELE FORMAT:	PRO-MAK-INF 3/32" (2.3mm) width
GUITAR PICKUP:	Standard pickup length of 2.65" (67.3mm) will fit most guitars with 2.5" (63.5mm) string spacings
UKULELE PICKUP:	Standard pickup length of 2" (50.8mm) will fit most ukuleles up to 1.85" (47mm) string spacings
BATTERY:	9-Volt
BATTERY LIFE:	384 hours



Photo Credit:
Aaron Farrington



AG-Series

Passive Undersaddle Pickups



Our classic undersaddle ceramic guitar pickup. AG-Series pickups do not require a battery, but an impedance-matching preamp is recommended, for best performance. Available in a variety of widths and string spacings.

AG-Series Passive Undersaddle Pickups feature:

- Fishman's piezo crystal passive undersaddle guitar pickup
- Available in a variety of widths and string spacings for steel and nylon stringed guitars, including classical, 12-string, and ukulele
- An impedance matching preamp is recommended, but not required
- Professional installation recommended

AG-SERIES PICKUPS

MODEL NUMBER 1 6-STRING GUITAR:	PRO-AG0-094 <i>3/32" (2.3mm) saddle width and 2.125" E to E string spacing</i>
MODEL NUMBER 2 CLASSICAL OR 12-STRING GUITAR:	PRO-AGX-094 <i>3/32" (2.3mm) saddle width and 2.312" E to E string spacing</i>
MODEL NUMBER 3 6-STRING GUITAR:	PRO-AG1-125 <i>1/8" (3.2mm) saddle width and 2.125" E to E string spacing</i>
MODEL NUMBER 4 CLASSICAL or 12-STRING GUITAR:	PRO-AGX-312 <i>1/8" (3.2mm) saddle width and 2.312" E to E string spacing</i>
MODEL NUMBER 5 UKULELE:	PRO-AG0-UKE <i>3/32" (2.3mm) saddle width and 1.67" (42.4mm) G to A string spacing</i>



Blackstack

Passive Soundhole Pickup



Be heard in even the loudest rock band with Fishman's new Blackstack passive soundhole pickup. Now, that vintage sound of a humbucking magnetic pickup is available in a modern, battery-free design.

It features adjustable pole-pieces and a premium TA4 mini-XLR connector integrated into the housing allowing easy installation, removal and connection to the included cable or your own custom endpin mounting solution.

Blackstack Passive Soundhole Pickup features:

- Humbucking magnetic coil with cutting vintage sound
- Passive design for battery-free operation
- Adjustable pole pieces allow for perfect string balance adjustment and help to compensate for varying string heights between instruments
- Included 5 foot cable featuring premium TA4 mini-XLR connector to 1/4" combination endpin jack / in-line connector for easy install and removal
- Use out-of-the-box with included cable or create your own custom endpin jack solution

BLACKSTACK SOUNDHOLE PICKUP

MODEL NUMBER:	PRO-BLK-STK
INSTALLATION:	Fits soundholes as small as 3 5/8" (92mm) diameter. Premium TA4 mini-XLR connector for easy install with included cable



"The Blackstack was a game changer for Elvis Monroe. This pickup allows the freedom and power of an acoustic guitar in a loud environment that I've been trying to find for years. The Blackstack has an amazing vintage quality but sits perfectly in the space you need a guitar to speak in! Whether it's a small stage, the biggest arena, or anything in between, the Blackstack is my choice 100% of the time."

– Ben Carey, *Elvis Monroe*



Neo-D

Passive Soundhole Pickups



This value-priced cousin of the award-winning Rare Earth pickup shares the same neodymium magnet structure for exceptional string balance and sparkling acoustic clarity. The Neo-D's low-profile, high-impedance design needs no battery. Available in single coil and humbucking models.

Single Coil — Brilliant and articulate single coil sound

Humbucking — Warm and full humbucking sound

Neo-D Passive Soundhole Pickups feature:

- Neodymium magnet structure for exceptional string balance and sparkling acoustic clarity
- Low profile, high-impedance design needs no battery
- Easy installation with no alteration, plug and play right out of the box
- Excellent string-to-string balance and acoustic clarity
- Humbucking model features stacked coils to eliminate noise

NEO-D SOUNDHOLE PICKUPS

MODEL NUMBER 1 SINGLE COIL:	PRO-NEO-D01
MODEL NUMBER 2 HUMBUCKING:	PRO-NEO-D02
INSTALLATION:	Fits soundholes as small as 3 7/8" (98.4mm) diameter. Pre-wired output jack can also be endpin mounted



"I'm getting the best sound I've ever gotten on my Weissenborns with the Neo-D Humbucking. Deep, tight lows, sweet and solid highs and warmth and clarity in the mids. I like it so much I put one in my six string as well."

– Ed Gerhard, GRAMMY® Award-winning guitarist



Neo-Buster Humbucking

Passive Soundhole Pickup & Feedback Buster



The Neo-Buster Humbucking from Fishman combines our popular Neo-D® Humbucking pickup with a feedback-fighting soundhole cover to give you great sounding acoustic tone, even in your loudest performances.

This humbucking magnetic soundhole pickup produces a warm and full sound while also greatly reducing hum and unwanted interference. It also shares the same neodymium magnet structure as the award-winning Rare Earth® pickup for exceptional string balance and incredible acoustic clarity. Its low-profile, high impedance design needs no battery.

When you need to play in high-volume situations, the integrated soundhole cover reduces the build-up of energy inside the guitar that often leads to uncontrollable howling. Made of a flexible elastomer that will not react with most finishes, it requires no tools for installation, and fits most flat-top guitars with a 3 7/8" or 4" diameter soundhole.

Neo-Buster Humbucking features:

- Neodymium magnet structure for exceptional string balance and sparkling acoustic clarity
- Integrated feedback-buster for high-volume playing
- Low-profile, high-impedance design needs no battery
- Flexible surround reduces "howling" in high volume situations
- Easy installation with no alteration
- Tool-free installation

NEO-BUSTER HUMBUCKING

MODEL NUMBER:	PRO-NEO-FB2
OUTPUT:	10' cable with 1/4" plug
INSTALLATION:	Fits soundholes with 3 7/8" (98.4mm) or 4" (101.5mm) diameter





Rare Earth Active Soundhole Pickups



Equipped with cutting-edge neodymium magnets, the newest versions of Fishman's Rare Earth pickups offer a warmer, more natural acoustic tone, along with exceptional accuracy and increased musicality.

Both models have been carefully re-voiced and fine-tuned to offer an even smoother treble response than their popular, category-defining predecessors.

The Rare Earth Humbucking also features stacked coils to eliminate noise and a volume control wheel for easy, accessible adjustments.

Single Coil — Brilliant and articulate single coil sound

Humbucking — Warm and full humbucking sound

Rare Earth Active Soundhole Pickups feature:

- Re-voiced and fine-tuned for smoother treble response and a warmer, more naturally acoustic tone
- Active electronics and neodymium magnet structure for exceptional string balance and sparkling acoustic clarity
- Miniature batteries mount conveniently on the underside of the pickup (batteries included)
- Low-current preamp design allows up to 240 hours between battery changes
- Redesigned mounting system and ergonomic body shape
- Pre-wired output jack can also be endpin-mounted
- Easy installation with no alteration, plug-and-play right out of the box

RARE EARTH SOUNDHOLE PICKUPS

MODEL NUMBER 1 SINGLE COIL:	PRO-REP-101
MODEL NUMBER 2 HUMBUCKING:	PRO-REP-102
INSTALLATION:	Fits soundholes as small as 3 7/8" (92mm) diameter. Pre-wired output jack can also be endpin mounted
CONTROLS:	Volume Control Wheel (Rare Earth Humbucking only)
BATTERY:	Two 1.5-Volt silver oxide or one 3-Volt lithium
BATTERY LIFE:	240 hours



"The feedback-rejecting qualities come into their own in the live concert environment and the extra sonic focus of the Rare Earth provides clarity and punch on picked solo lines as well as conventional rhythm playing."

– Ian Anderson



Rare Earth Blend

Active Soundhole Pickup



An improved microphone and re-voiced electronics offer a warmer, more natural acoustic tone. Easily accessible Mic/Pickup Blend Control offers fingertip control to dial in just the right blend. For unequalled sound quality and ease of use, it's hard to beat the performance of the Rare Earth Blend.

Cutting-edge neodymium magnets provide excellent string-to-string balance while the pickup's active electronics and low-noise, discrete circuitry design keep the sound pure and clean with smooth response throughout the frequency range.

Rare Earth Blend Active Soundhole Pickup features:

- Re-voiced and fine-tuned for smoother treble response and a warmer, more naturally acoustic tone
- Active electronics and neodymium magnet structure for exceptional string balance and sparkling acoustic clarity
- Flexible cardioid microphone and mic/pickup blend control
- Miniature batteries mount conveniently on the underside of the pickup (batteries included)
- Low-current design of the preamp allows up to 110 hours between battery changes
- Newly designed mounting system and ergonomic body shape
- Pre-wired output jack can also be endpin mounted
- Easy installation with no alteration, plug-and-play right out of the box

RARE EARTH BLEND SOUNDHOLE PICKUP

MODEL NUMBER:	PRO-REP-103
INSTALLATION:	Fits soundholes as small as 3 5/8" (92mm) diameter. Pre-wired output jack can also be endpin mounted
CONTROLS:	Mic/Pickup Blend Control
BATTERY:	Two 1.5-Volt silver oxide or one 3-Volt lithium
BATTERY LIFE:	110 hours



Photo Credit: Marek Zawrotny

"By using multiple sources, the Rare Earth Blend pickup system simply recreate more frequencies - lots of deep lows, rich mids and sparkly highs. When you see a solo guitar player perform live they have that "big" sound, and you're wondering how a single acoustic guitar can fill up a big room with such a huge, satisfying tone - not loud, just "full" - it's almost certainly a Rare Earth Blend.

- Jon Gomm



Ellipse Matrix Blend Pickup & Preamp System



Add the power and sonic clarity of Fishman's renowned blending technology to your guitar, without any visible modification.

The Ellipse® Matrix Blend combines the world's best-selling undersaddle pickup, the Fishman Acoustic Matrix®, with the popular Ellipse® Blend, to give you incredible tone at your fingertips.

With its flexible gooseneck condenser microphone, volume, blend, and phase controls, the Ellipse Matrix Blend makes it possible to have the best of both worlds when you play. The sparkling, transparent sound and control that our Acoustic Matrix pickup is complemented by the unique and expressive character of a microphone.

Ellipse Matrix Blend Pickup & Preamp System features:

- Super low-noise onboard preamp system
- Ergonomic soundhole-mounted design puts slider controls at fingertips to maintain a natural playing position
- Features the world's best selling undersaddle pickup, the Acoustic Matrix®
- Phase switch (feedback control)
- Custom-designed cardioid condenser mini-microphone with gooseneck mount and accessible mic/pickup blending plus mic trim control
- Unique patent-pending neodymium magnetic mounting system for easy, solder-free installation
- Solder-free connections
- Switchable low frequency tone-shaping built into preamp
- Pickup available in wide, narrow or split formats
- Professional installation recommended

ELLIPSE MATRIX BLEND

MODEL NUMBER 1	PRO-MAT-EL2
WIDE FORMAT:	1/8" (3.2mm) width
MODEL NUMBER 2	PRO-MAN-EL2
NARROW FORMAT:	3/32" (2.3mm) width
PICKUP LENGTH:	Standard pickup length of 2.65" (67.3mm) will fit most guitars with 2.5" (63.5mm) string spacings
SOUNDHOLE:	Accommodates most round soundholes from 3 7/8" (98mm) to 4 1/8" (105mm) in diameter
BATTERY:	9-Volt
BATTERY LIFE:	220 hours



"The Ellipse Matrix Blend pickup makes my touring musician's life easy. I never need any EQ to get a great, powerful, dynamic, acoustic amplified sound. It's so effective! That's why I chose the Ellipse pickup for my Martin Signature model guitar."

– Jacques Stotzem



Ellipse Aura Pickup & Preamp System



To create true-to-life sound, the Ellipse® Aura combines our most sophisticated onboard preamp design with the power of Aura Acoustic Imaging Technology.

Ellipse Aura allows acoustic musicians to easily and accurately replicate the sound of their instrument, as mic'd in a professional studio. Players can load up to four Aura images into this intuitive, discreetly mounted soundhole-mounted preamp. The ergonomic design of the Ellipse Aura puts slider controls at the player's fingertips, helping to maintain a natural playing position.

The Ellipse Aura features Pickup/Image Blend, Volume and switchable Natural I and Natural II Low Frequency tone-shaping, a Phase Switch and automatic Anti-Feedback control.

Ellipse Aura Pickup & Preamp System features:

- State-of-the-art onboard preamp featuring Fishman's revolutionary Aura Acoustic Imaging Technology
- Up to four Aura Images can be downloaded from Fishman's Aura Image Gallery software (included)
- Features the world's best selling undersaddle pickup, the Acoustic Matrix®
- Automatic anti-feedback
- Pickup/Image blend control
- Volume control
- Phase switch (feedback control)
- Low battery indicator
- Unique patented neodymium magnetic mounting system for easy, solder-free installation
- Solder-free connections
- Switchable low frequency tone-shaping built into preamp
- Pickup available in wide, narrow or split formats
- Professional installation recommended

ELLIPSE AURA	
MODEL NUMBER 1 WIDE FORMAT:	PRO-MAT-ELA 1/8" (3.2mm) width
MODEL NUMBER 1 NARROW FORMAT:	PRO-MAT-ELA 3/32" (2.3mm) width
PICKUP LENGTH:	Standard pickup length of 2.65" (67.3mm) will fit most guitars with 2.5" (63.5mm) string spacings
SOUNDHOLE:	Accommodates most round soundholes from 3 7/8" (98mm) to 4 1/8" (105mm) in diameter
BATTERY:	9-Volt
BATTERY LIFE:	33 hours



Photo Credit: Russell Carson

"The Ellipse Aura gives me the sound of my guitar in ANY situation at ANY volume. I can't live without it!"

– Stephen Mougins, guitarist/vocalist for the Sam Bush Band,
Nedski and Mojo, Owner/Operator of Dark Shadow Recording



Enter the Haggis



Frank Solivan & Dirty Kitchen



J'Anna Jacoby

"I was saved when I found the Fishman pickup and have never looked back. It's been my favorite one-stop solution for every musical situation from classical to pop to jazz to rock. You can't beat the clarity of tone and its ability to amplify in loud situations. It's also really easy to put on and take off of the instrument, so for someone who skates between genres that's always been a big benefit to me."

– J'Anna Jacoby, violinist and mandolin player for Rod Stewart



Missy Raines

Photo Credit: Deone Jahnke



Zach Runquist

Photo Credit: Kristen Bearfield

"I've been using Fishman pickups for over a decade. I depend on them for excellent tone and reliability. I use the V-300 on violin, the M-300 on mandolin, the Archtop Guitar Pickup, the Nashville Series for my Resonator guitar and Dobro (coupled with the Jerry Douglas signature Pedal), and the Ellipse Matrix Blend on my acoustic guitar. No matter what the venue is, I can count on Fishman products to provide me with clear, consistent tone, night after night."

– Zach Runquist, producer, songwriter, and sideman



Jimmy Stafford
Train

Photo Credit: Brendan Walter



Bluegrass

Classic Series Mandolin Pickups



M-100



M-200

The **M-100** consists of a piezo-ceramic pickup element that is embedded in an adjustable ebony replacement bridge. Comes complete with a 1/4" external jack for easy mounting.

The **M-200** is identical to the M-100, but includes a Carpenter style 1/4" output jack that mounts on the side of the instrument.

Classic Series M-100 Mandolin Pickup and Classic Series M-200 Professional Mandolin Pickups feature:

- Piezo-ceramic pickup element embedded in an adjustable ebony replacement bridge
- Designed for all archtop-style mandolins
- An impedance matching preamp is recommended, but not required
- Professional installation recommended

CLASSIC SERIES MANDOLIN PICKUPS

MODEL NUMBER 1 M-100 MANDOLIN PICKUP:	PRO-M10-0MA <i>Includes a 1/4" external jack for easy mounting</i>
MODEL NUMBER 2 M-200 MANDOLIN PICKUP:	PRO-M20-0MA <i>Professional Mandolin Pickup includes a Carpenter-style 1/4" output jack that mounts on the side of the instrument</i>



Photo Credit: Anthony Scarlati

"I've been using Fishman pickups for years on all my major tours. They deliver a warm acoustic richness while still projecting in an arena or stadium. I love the M-200 on my mandolin. It makes it sound like it's 10 feet tall!"

– Lorenza Ponce



Bluegrass Nashville Series Pickups



BISCUIT-STYLE RESOPHONIC



SPIDER-STYLE RESOPHONIC



M-300



M-400

The **Biscuit-Style Resophonic Pickup** features a complete replacement biscuit with an embedded piezo-ceramic pickup designed specifically for biscuit-style Resophonic and includes a saddle and 1/4" external jack for easy mounting.

The **Spider-Style Resophonic Pickup** features a split saddle piezo-ceramic pickup designed specifically for spider-style bridges and includes a 1/4" endpin jack for easy mounting.

The **M-300 Archtop Mandolin Pickup** features a piezo-ceramic pickup element embedded in the bottom bridge, and an adjustable ebony replacement bridge. Designed for all archtop-style mandolins, it includes a Carpenter 1/4" output jack that mounts on the side of the instrument.

The **M-400 Mandolin Pickup** features a piezo-ceramic pickup element embedded in a quality rosewood bridge and includes a Carpenter 1/4" output jack that mounts on the side of the instrument.

Nashville Series Resophonic and Mandolin Pickups feature:

- Consistent, accurate sound reproduction for every performance
- An impedance matching preamp is recommended, but not required
- Professional installation recommended

NASHVILLE SERIES PICKUPS

MODEL NUMBER 1:	PRO-RES-BIS <i>Nashville Series Biscuit-Style Resophonic Pickup</i>
MODEL NUMBER 2:	PRO-RES-SPI <i>Nashville Series Spider-Style Resophonic Pickup</i>
MODEL NUMBER 3:	PRO-M30-OMA <i>Nashville Series Archtop Mandolin Pickup</i>
MODEL NUMBER 4:	PRO-M40-OMA <i>Nashville Series Flat Top Mandolin Pickup</i>



"I've really enjoyed using my Fishman Nashville Series Reso Pickup! When I use it in combination with my JD Aura Pedal, the tone is incredible! It has made live performances more enjoyable for me. I just plug in and the great tone is always there!

– Rob Ickes, *eleven-time IBMA Dobro Play of the Year*



Bluegrass

Classic Series Banjo Pickup



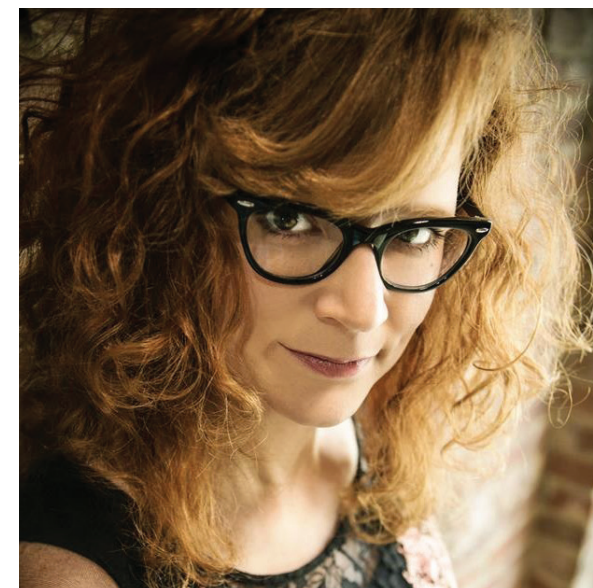
Our second generation banjo pickup features a quiet humbucking coil, a powerful neodymium magnet assembly and a specially designed preamp to strengthen and preserve the natural sound of the banjo. Fits dual coordinator rod instruments and may be modified to fit single rod banjos.

Classic Series Banjo Pickup features:

- Quiet humbucking coil and a powerful neodymium magnet assembly
- Specially designed preamp to strengthen and preserve the natural sound of the banjo
- Fits dual coordinator rod instruments and may be modified to fit single rod banjos
- Easy installation with no alteration

CLASSIC SERIES BANJO PICKUP

MODEL NUMBER 1:	PRO-REP-BAN
BATTERY:	9-Volt
BATTERY LIFE:	5,000+ hours



"I love my Fishman Classic Series banjo pickup. It gives my DP Hopkins signature model clawhammer the increased volume level I need for the larger stages we play without getting in the way of the banjo's natural warm tone. I'm clawing loud and proud with Fishman!"

– Becky Buller, songwriter and bluegrass multi-instrumentalist



Bluegrass

Classic Series Resophonic Pickups



This pickup reproduces the unique tonal character of your resophonic guitar. This simple and unobtrusive pickup, (the size and shape of a small washer), captures that funky, throaty signature resophonic tone, with unprecedented accuracy and resistance to feedback.

Classic Series Resophonic Pickups feature:

- Fasten to the center of the cone in all resonator guitars
- Resophonic pickup fits spider and Dobro® “biscuit” bridges
- Strong resistance to feedback
- Active models require a 9-Volt battery and include an impedance matching preamp for direct connection to any DI, mixer or acoustic instrument amplifier
- Professional installation recommended

CLASSIC SERIES RESOPHONIC PICKUPS

MODEL NUMBER 1:	PRO-RES-001
PASSIVE:	<i>Fastens to the center of the cone for both 'spider' and 'biscuit' style bridges.</i>
MODEL NUMBER 2:	PRO-RES-002
ACTIVE:	<i>Fastens to the center of the cone in both 'spider' and 'biscuit' style bridges</i>
BATTERY:	9-Volt



Strings

Full Circle Upright Bass Pickup



Plug in the Full Circle and the sound of your upright is all there. Whether it's big, fat and punchy pizz, full-voiced arco or slap, you'll hear all the acoustic qualities, dynamics, and nuances of your bass — and so will your audience.

A **Platinum Stage** or **Platinum Pro EQ** preamp, which have dedicated Bass modes, is recommended, but not required.

Full Circle Upright Bass Pickup features:

- Accurate, transparent sound and superior dynamic response
- Fine tuning feature lets you quickly choose between an open, resonant response or a more focused tone to match your instrument and playing style
- Encased inside a sturdy aluminum height adjuster wheel
- Quick retro-fit on instruments with height adjustment wheels
- An impedance-matching preamp is recommended, but not required
- Professional installation recommended

FULL CIRCLE UPRIGHT BASS PICKUP

MODEL NUMBER 1:	PRO-FCL-001 UNC 1/4-20 format
MODEL NUMBER 2:	PRO-FCL-002 6 x 1mm format
MODEL NUMBER 3:	PRO-FCL-003 UNC 5/16-18 format



"The Full Circle is the truest sounding pickup that I've found for the acoustic upright bass – equally great tone and texture in live performance and in the studio as well. I use it in both settings and always love the results! Don't leave home without it."

– Hutch Hutchinson, *bassist for Bonnie Raitt*



Strings

BP-100 Upright Bass Pickup



This is the product that started it all: our classic bridge-mounted, dual element piezo-ceramic pickup. The BP-100 installs in minutes and delivers deep sustained pizz tone and fast articulation with emphasized direct string sound.

BP-100 Upright Bass Pickup features:

- Fishman's classic bridge-mounted dual element piezo-ceramic pickup
- Delivers deep sustained pizz tone and fast articulation with emphasized direct string sound
- An impedance matching preamp is recommended, but not required
- Professional installation recommended

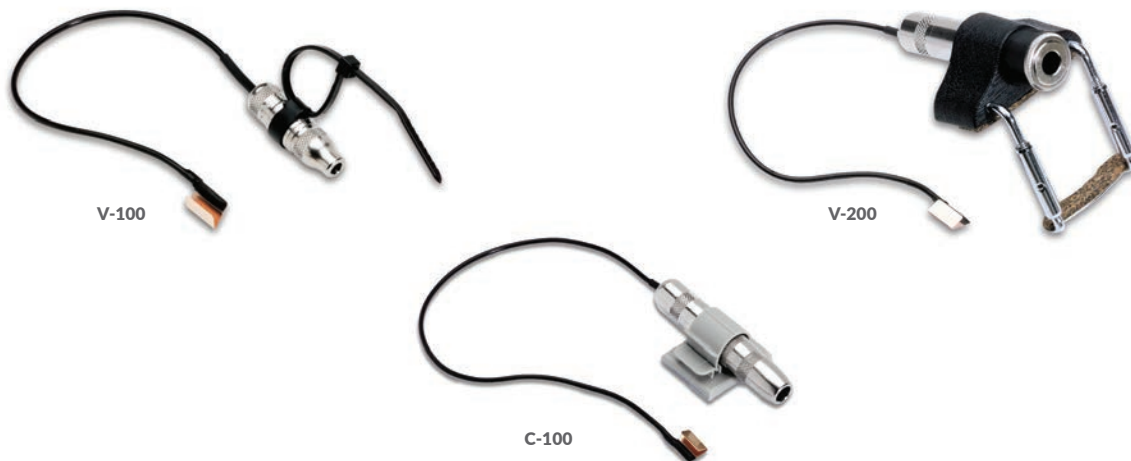
BP-100 UPRIGHT BASS PICKUP

MODEL NUMBER 1:	PRO-BP1-00B <i>(includes felted U-clips)</i>
-----------------	-------------------------------------------------



Strings

Classic Series Pickups for Violin, Viola & Cello



Classic Series V-100 Violin/Viola Pickup

This piezo-ceramic pickup mounts in the wing slot of the violin bridge with Fishman's patented Floating Mount System. Lightweight to minimize muting, the V-100 includes a mini jack which mounts to the tailpiece. A 10', 1/8" to 1/4" cable is included.

Classic Series V-200 Violin/Viola Pickup

The same pickup element as the V-100, the V-200 employs a Carpenter-style 1/4" output jack which mounts on the side of the instrument with chinrest-style hardware. An Aura Imaging preamp can be used for the ultimate in depth and realism.

Classic Series C-100 Cello Pickup

Utilizes Fishman's patented Floating Mount system for easy installation in the wing slot of the bridge. A 1/4" tailpiece mounted jack and 10' cable complete the package.

Classic Series Violin/Viola Pickups (V-100 and V-200) and Classic Series Cello Pickup (C-100) feature:

- Piezo-ceramic pickup
- Lightweight to minimize muting
- An impedance matching preamp is recommended, but not required
- Easy installation with no alteration

CLASSIC SERIES STRINGS PICKUPS

MODEL NUMBER 1:	PRO-V10-0VI V-100 Violin/Viola Pickup
MODEL NUMBER 2:	PRO-V20-0VI V-200 Violin/Viola Pickup
MODEL NUMBER 3:	PRO-C10-0CE C-100 Cello Pickup



"The Fishman V-200 has never let me down. This pickup allows me to retain the unique tone of my violin without losing any vital frequencies...or gaining any unwanted ones! It's simply the best on the market and I often find myself recommending the V-200 to other players, regardless of what genres they play!"

– Erica Nockalls, *The Wonder Stuff*, *The Proclaimers* and *Erica Nockalls band*



Strings

Concert Series Pickups for Violin, Viola & Cello



V-300



V-400



C-200

These pickups offer an extraordinary level of performance, tone quality and accuracy for stringed instruments.

The piezo-ceramic Concert Series pickup for violin is pre-installed in high-quality Despiau bridges to provide the ultimate performance — a precise and perfectly balanced tone from string to string.

An exceptionally clear and natural tonal response reveals the true character of the instrument. These pickups sound remarkably consistent every time they are played.

Fishman's Concert Series pickups are also optimized for use with Fishman Aura Imaging products to provide a higher level of sound quality and added sonic versatility in live performance.

Concert Series Violin Pickup (V-300), Viola pickup (V-400) and Cello pickup (C-200) feature:

- Accurate reproduction of your instrument's unique acoustic sound
- Piezo-ceramic pickup skillfully crafted into a high-quality Despiau bridge
- Consistent sound for every performance
- Professional installation required
- An impedance matching preamp is recommended, but not required

CONCERT SERIES STRINGS PICKUPS

MODEL NUMBER 1:	PRO-V30-0VI V-300 Violin Pickup
MODEL NUMBER 2:	PRO-V40-0VI V-400 Viola Pickup
MODEL NUMBER 3:	PRO-C20-0CE C-200 Cello Pickup



Photo Credit: David Beardsley

"Since I started using the V-300 violin pickup, I've finally gotten rid of the harsh electric sound that plagued me. I wanted the tone of an acoustic but with enough power and volume to play with a live band, and I've finally found it."

– Rebecca Zeller, *Ra Ra Riot*



Aura Pro Onboard Preamp System



With the success of Aura® Imaging Technology, guitar manufacturers asked us to develop an Aura system that could be built into their top-tier acoustic-electric models. The Aura Pro is that product, and is now available to players everywhere.

Onboard Aura systems include Fishman's Aura Image Gallery software, a PC/Mac compatible application that allows users to access Images for hundreds of guitar makes and models through our free Aura Image library. Once installed on your PC or Mac, the software also allows Aura Images to be sorted, managed, and grouped. Users can then take advantage of the preamp's open architecture by loading Aura Images via a USB cable.

Aura Pro Onboard Preamp System features:

- Onboard preamp featuring Fishman's Aura Acoustic Imaging Technology
- Download up to four Aura Images from the Aura® Image Gallery software (included)
- Pickup/Image blend control
- Volume, Bass, Middle, and Treble controls
- Fully-programmable digital equalization
- Feedback-fighting phase control
- Digital chromatic tuner
- Automatic anti-feedback
- Low battery indicator
- Smaller footprint than the full sized Onboard Aura
- Unique pivot design for instant 9-Volt battery access
- System includes an Acoustic Matrix® undersaddle pickup (available in wide, narrow or split formats) and a Switchjack stereo endpin jack
- Professional installation recommended

AURA PRO	
MODEL NUMBER 1 WIDE FORMAT:	PRO-MAT-P81 1/8" (3.2mm) width
MODEL NUMBER 2 NARROW FORMAT:	PRO-MAN-P81 3/32" (3.2mm) width
DIMENSIONS:	1.75" W x 2.58" H (44.5mm) x (65.5mm)
BATTERY:	9-Volt
BATTERY LIFE:	27 hours



"As a touring musician, achieving the most consistent sound from my acoustic guitar is always a challenge. This is an even bigger challenge as I use varying techniques and tunings, and I need to hear myself clearly and at a comfortable level while desiring my guitar to sound acoustic both on stage and to the audience. The Fishman Aura Pro system gives me exactly what I need and much more. No matter where I'm performing, this versatile system gives me the best in flexibility, high quality acoustic tone, 'fast as lightning' setup, and allows me to have the confidence I need to perform at my best."

– Jim Hurst, guitarist, vocalist, multi-instrumentalist and two-time IBMA Guitar Player of the Year



Prefix Premium Blend Onboard Preamp System



The Prefix Premium Blend features our acclaimed Acoustic Matrix® undersaddle pickup, onboard chromatic tuner, and a gooseneck-style internal microphone. To complement and contrast this pickup, our miniature gooseneck mic captures the guitar's elusive natural ambience and sound chamber resonance.

Blend the pickup and the microphone together for a powerful and cohesive acoustic guitar tone that is deeper and more "filled out" than the sound of either the microphone or pickup alone. To complete the package, we include a phase switch and an adjustable notch filter, both essential for fighting feedback.

Prefix Premium Blend features:

- State-of-the-art onboard preamp
- Volume control as well as Bass, Treble, and a wide-range semi-parametric EQ to isolate certain frequencies, and boost or cut them as needed
- Feedback-fighting Notch filter and Phase switch
- Onboard chromatic tuner can be used without plugging in the guitar
- Gooseneck-style internal microphone with a pickup/mic blending slider
- Low battery indicator
- Unique pivot design for instant 9-Volt battery access
- System includes an Acoustic Matrix® undersaddle pickup and Switchjack Stereo Endpin Jack
- Pickup available in wide, narrow or split formats
- Professional installation recommended

PREFIX PREMIUM BLEND

MODEL NUMBER 1	PRO-MAT-AP7
WIDE FORMAT:	1/8" (3.2mm) width
MODEL NUMBER 2	PRO-MAN-AP7
NARROW FORMAT:	3/32" (3.2mm) width
DIMENSIONS:	2.46" W x 4.02" H (62.5mm) x (102mm)
BATTERY:	9-Volt
BATTERY LIFE:	130 hours



"Fishman allows me to sound acoustic and still look cool doin' it!"

– Nick Wheeler, *The All-American Rejects*



Prefix Plus-T

Onboard Preamp System



®

The Prefix Plus-T features ultra-quiet electronics and Volume, Bass, Treble and semi-parametric Contour controls.

The Prefix Plus-T also offers a Brilliance control, Phase switch and Notch filter to help fight feedback. In addition, the built-in chromatic tuner can be used without plugging in the guitar.

Prefix Plus-T features:

- Fishman quality, reliability and performance
- Volume control as well as Bass, Treble, Brilliance control, and a wide-range semi-parametric EQ to isolate certain frequencies, and boost or cut them as needed
- Feedback-fighting Notch filter and Phase switch
- Onboard chromatic tuner can be used without plugging in the guitar
- Brilliance slider
- Low battery indicator
- Unique pivot design for instant 9-Volt battery access
- System includes an Acoustic Matrix® undersaddle pickup and Switchjack Stereo Endpin Jack
- Pickup available in wide, narrow or split formats
- Professional installation recommended

PREFIX PLUS-T	
MODEL NUMBER 1 WIDE FORMAT:	PRO-MAT-PT4 1/8" (3.2mm) width
MODEL NUMBER 2 NARROW FORMAT:	PRO-MAN-PT4 3/32" (3.2mm) width
DIMENSIONS:	2.46" W x 4.02" H (62.5mm) x (102mm)
BATTERY:	9-Volt
BATTERY LIFE:	150 hours



Prefix Pro & Prefix Pro Blend Onboard Preamp System



Ideal for smaller body guitars! This system packs features similar to our original Prefix series, but on a smaller bezel that occupies 1/3 less space on the guitar. An excellent fit on slim-bodied acoustic-electrics.

Prefix Pro and Prefix Pro Blend feature:

- Designed for slim-bodied acoustic-electrics – 2" x 3" bezel occupies 1/3 less space than standard Prefix models
- Volume control as well as Bass and Treble controls
- Feedback-fighting Notch filter and Phase switch
- Revolutionary pivot design for instant 9-Volt battery access
- System includes an Acoustic Matrix® undersaddle pickup and Switchjack Stereo Endpin Jack
- Pickup available in wide, narrow or split formats)
- Professional installation recommended

Prefix Pro includes:

- Brilliance slider

Prefix Pro Blend includes:

- Internal microphone
- Pickup/Mic blend control
- Wide-range semi-parametric Contour EQ
- Stereo or mono signal paths for the system's pickup and microphone

PREFIX PRO	
MODEL NUMBER 1	PRO-MAT-P01
WIDE FORMAT:	1/8" (3.2mm) width
MODEL NUMBER 2	PRO-MAN-P01
NARROW FORMAT:	3/32" (3.2mm) width
DIMENSIONS:	1.75" W x 2.58" H (44.5mm) x (65.5mm)
BATTERY:	9-Volt
BATTERY LIFE:	160 hours

PREFIX PRO BLEND	
MODEL NUMBER 1	PRO-MAT-P51
WIDE FORMAT:	1/8" (3.2mm) width
MODEL NUMBER 2	PRO-MAN-P51:
NARROW FORMAT:	3/32" (3.2mm) width
DIMENSIONS:	1.75" W x 2.58" H (44.5mm) x (65.5mm)
BATTERY:	9-Volt
BATTERY LIFE:	140 hours



Presys+ Onboard Preamp System



The Presys+ Onboard Preamp System is designed and built to offer maximum control, performance and quality in a small, unobtrusive format. The compact and sophisticated Presys+ offers Volume, Bass, Mid, Treble and Brilliance controls, a Phase switch, Notch filter, and a built-in tuner with LED display. The Presys+ system also includes a pre-wired Fishman Sonicore pickup for solder-free, plug and play installation, a low battery indicator, low profile control knobs and a unique pivot design for easy access to the battery compartment.

Presys+ features:

- Small footprint fits many guitars
- Volume control
- Bass, Middle and Treble controls
- Built-in tuner with LED display
- Phase switch
- Low battery indicator
- Unique pivot design for instant 9-Volt battery access
- Pre-wired Fishman Sonicore pickup for solder-free installation
- Low profile control knobs
- Onboard anti-feedback control (notch)
- Brilliance control for additional tone shaping
- Professional installation recommended

PRESYS+	
MODEL NUMBER:	PRO-PSY-201 <i>Presys+ w/ Sonicore pickup, anti-feedback control, brilliance control and endpin jack</i>
DIMENSIONS:	2.2" W x 3.2" H (55.8mm) x (84.2mm)
BATTERY:	9-Volt
BATTERY LIFE:	88 hours



Powerjack

Endpin-Mounted Preamp



A miniature onboard preamp built into an elongated endpin jack. The Powerjack will give active performance to your passive piezo pickup — 12,000+ hour battery life from a single 9-Volt battery!

POWERJACK	
MODEL NUMBER:	PRO-PJA-001
DIMENSIONS:	4.75" W x 2.2" H x 6.75" D (120mm) x (55.8mm) x (171.4mm)
WEIGHT:	5.6 oz
BATTERY:	9-Volt
BATTERY LIFE:	12,000 hours
INSTALLATION:	Professional installation is recommended



SBT Soundboard Transducers



SBT-C



SBT-E



SBT-HP

The SBT Series pickups will reproduce a full, natural, transparent tone and can be mounted on any type of acoustic stringed instrument equipped with a flat soundboard. All three models are crafted to sense the micro vibrations of a soundboard and are a practical alternative to more expensive bridge mounted units that require the services of a repairman for installation.

The **SBT-C** is recommended for easy installation on nylon string guitars, steel string guitars, dulcimers and similar stringed instruments.

The **SBT-E** features the Fishman Switchjack™ and is recommended when a permanent installation is desired.

The **SBT-HP** is designed specifically for harp and piano.

SBT-C, SBT-E and SBT-HP Soundboard Transducers feature:

- Full, natural transparent tone
- Can be mounted on any type of acoustic stringed instrument equipped with a flat soundboard
- An impedance matching preamp is recommended, but not required
- Professional installation recommended

SBT SOUNDBOARD TRANSDUCERS

MODEL NUMBER 1 SBT-C SOUNDBOARD:	PRO-SBT-CLA <i>Designed for classical/nylon string guitar and all flat-top string instruments - for temporary installation.</i>
MODEL NUMBER 2 SBT-E SOUNDBOARD:	PRO-SBT-END <i>Designed for classical/nylon string guitar and all flat-top string instruments - includes endpin jack for permanent installation.</i>
MODEL NUMBER 3 SBT-HP SOUNDBOARD:	PRO-SBT-HAP <i>Designed for harp & piano. Includes long lead wire and 1/4" jack which can be mounted on a variety of instruments.</i>





Archtop Guitar Pickup



Dual vibration-sensing piezo elements embedded in an adjustable ebony bridge give this pickup an unmistakable acoustic ambience. When paired with an impedance-matching preamp such as our Platinum Stage, Platinum Pro EQ or Powerjack, the full potential of our Archtop guitar pickup can be realized.

Archtop Guitar Pickup features:

- Dual vibration-sensing piezo-elements embedded in an adjustable ebony bridge
- Captures the unmistakable acoustic ambience of your archtop guitar
- An impedance matching preamp is recommended, but not required
- Professional installation recommended

ARCHTOP GUITAR PICKUP

MODEL NUMBER:	PRO-ARC-TOP
STRING SPACING:	2.125"
SUITABILITY:	Most instruments with a distance of 2.914 inch (74.01 mm) between adjustable bridge posts (center to center)
BRIDGE RADIUS:	12 inches



"As a guitar builder, I know each instrument has its own voice and character. It's all about transparency, really. Fishman pickups are the perfect compliment for the unique tone of your guitar."

– Ken Parker, Archtop guitar builder



Powerbridge Piezo Bridge Pickups



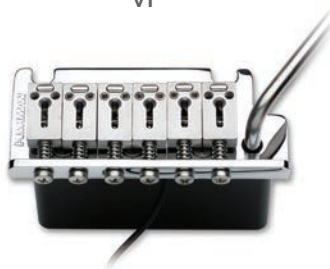
VT



AST



TUNE-O-MATIC



TSV



VMV



VS-50P

The world's finest acoustic pickup for your electric guitar!

Fishman Powerbridge piezo bridge systems bring full-bodied acoustic sound to your favorite electric guitar. Our Powerbridges offer the electric guitarist a palette of incredible acoustic and hybrid acoustic/electric sounds, for Strat®, Tele® and Les Paul® guitars.

The Fishman Powerbridge opens up a whole new world of sonic potential and can be played solo or in combination with the magnetics already in your guitar.

Powerbridge Piezo Bridge Pickups feature:

- The benefit of an acoustic pickup for electric guitar
- Piezo replacement bridges offer the electric guitarist a palette of incredible acoustic and hybrid acoustic/electric sounds
- Powerchip circuit is recommended, but not required
- Professional installation recommended

Strat® and Tele® are registered trademarks of FMIIC.
Les Paul® is registered trademark of Gibson Brands, Inc.

POWERBRIDGE	
MODEL NUMBER 1 VT:	PRO-TEL-101 <i>Vintage T-Style Powerbridge</i>
MODEL NUMBER 2 AST:	PRO-AST-101 <i>Modern T-Style Powerbridge</i>
MODEL NUMBER 3 TUNE-O-MATIC:	PRO-TOM-101 <i>Nashville-Style Powerbridge</i>
MODEL NUMBER 4 TSV:	PRO-VIB-101 <i>2-stud mount vibrato Powerbridge</i>
MODEL NUMBER 5 VMV:	PRO-VM2-101 <i>6-screw vintage style vibrato Powerbridge</i>
MODEL NUMBER 6 VS-50P:	PRO-CVS-50P <i>Wilkinson® style 2-stud vibrato Powerbridge</i>



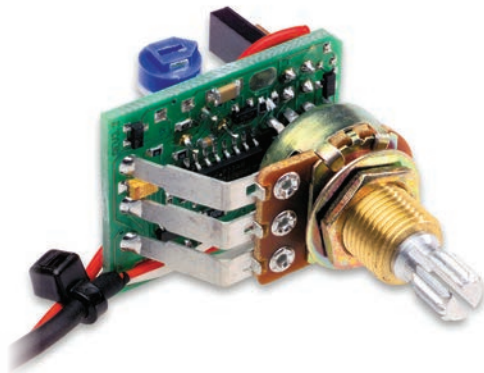
"I believe the Fishman Powerbridge has helped Pete's sound leap forward immensely – Listen how he uses it in every performance! It's really a joy to hear. It's a real blend - the real thing. The question I get asked the most is 'who's playing the acoustic?' So that speaks for itself!"

– Alan Rogan, *Guitar tech for Pete Townshend*



Powerchip

Onboard Mixing Preamp



The Powerchip is an essential onboard accessory for mixing of your Powerbridge and magnetic pickups. This Fishman designed piezo volume control works in conjunction with the exclusive 'Smart Switch' circuit, which automatically splits your piezo and magnetic signals to stereo or mixes them to mono.

Requires 9-Volt battery installation (battery box also available from Fishman) or can also be powered by a Fluence rechargeable battery pack.

Powerchip features:

- Onboard accessory for mixing Powerbridge and magnetic pickups
- Fishman-designed piezo volume control works in conjunction with an exclusive "Smart Switch" circuit, which automatically splits your piezo and magnetic outputs to stereo, or mixes them to mono

POWERCHIP

MODEL NUMBER 1:	PRO-PCH-001 <i>Fits standard electric guitars with pickguard</i>
MODEL NUMBER 2:	PRO-PCH-002 <i>Fits carved top electric guitars</i>
BATTERY:	9-Volt
BATTERY LIFE:	200 hours

ACCESSORIES

BATTERY BOX:	ACC-BAT-001
--------------	-------------



FT-2 Flip-On Tuner

Chromatic Tuner for Stringed Instruments



The Fishman FT-2 Flip-On Tuner provides quick and accurate tuning for most instruments with a simple flip. Clip it on, flip up the display and the FT-2 powers-on. Flip it back down after done tuning to shut it off. The large, high-contrast, backlit display is easy to read and shows pitch with ± 1 cent accuracy via tuning “needles” and a multi-color backlight.

It is also incredibly lightweight — weighing only 21 grams, so it won’t affect your instrument’s tone. When flipped down to the off position, it’s very low-profile, so you can leave it place while you’re playing and the soft clip is safe on most finishes.

FT-2 Flip-On Tuner features:

- Flip it up to turn it on, flip it down to turn it off
- Fully chromatic, automatically displays the note
- Large, easy to read LCD display lights green when in-tune, red for sharp, amber for flat
- Meter style “needle” display is accurate to ± 1 cent
- Built-in clip-on sensor
- Automatic power save shuts it off after 5 minutes
- Includes one 2032 coin battery

FT-2 TUNER	
MODEL NUMBER:	ACC-TUN-FT2
TUNING SOURCE:	Clip-on sensor
TUNING MODES:	Chromatic 12-note
PITCH RANGE:	A4: 440Hz
DETECTION RANGE:	A0 (27.5 Hz) - C8 (4,186 Hz)
BATTERY:	2032 coin battery (included)
DIMENSIONS:	1.9" L x 1.7" W x 1.1" H (48mm) x (44mm) x (27mm)
WEIGHT:	.07 oz (21 g)





FT-3 Digital Tuner

Chromatic Tuner for Stringed Instruments



The Fishman FT-3 Digital Tuner combines simplicity with convenience. It quickly and accurately determines the note being played and indicates if you're in tune, sharp or flat. And because it's chromatic, it works with nearly any instrument.

The FT-3's features an easy to read LCD display with meter-style pitch indicator and two-color backlight. When your note is sharp or flat, the display turns red; when you're in tune, it changes to green. It weighs only 22 grams, can easily fit in your pocket and runs on a single coin battery.

FT-3 Digital Tuner features:

- Fully chromatic, automatically displays the note
- Extra-bright LCD display lights green when in-tune and lights red for sharp or flat
- Meter style sharp and flat display
- Built-in microphone
- Automatic power-save and shut-off features to save batteries
- Includes one 2032 coin battery

FT-3 TUNER	
MODEL NUMBER:	ACC-TUN-FT3
TUNING SOURCE:	Mic
TUNING MODES:	Chromatic 12-note
PITCH RANGE:	440 Hz
DETECTION RANGE:	A0 (27.5 Hz) - C8 (4,186 Hz)
BATTERY:	2032 coin battery (included)
DIMENSIONS:	2.5" L x 1.2" W x 0.5" H (63.5mm) x (29.2mm) x (12.7mm)
WEIGHT:	1.6 oz (45 g)



Asterope Premium Audio Cables



Our premium audio cables deliver pure, uncolored and high definition sound.

Asterope products provide a reduction in noise and a substantial increase in clarity, harmonic and frequency response, and spectral balance. Artists, producers, and engineers are discovering the obvious difference Asterope delivers.

Asterope Pro Stage Series:

Ideal for more demanding environments when consistency, control and durability are essential to a successful performance. Provides artists and engineers a product that is clearly superior whether at a casual rehearsal or a large production.

Asterope Pro Studio Series:

Provides a more dynamic, spatial and superior sound. This is ideal for more intimate environments when clarity and harmonic response are critical. Utilizes revolutionary technology that delivers “high-definition” sound with greater bandwidth than ever before.

Asterope Premium Audio Cables feature:

- Highest quality conductive materials
- Proprietary wiring and production methods
- Patented Ultra-Clarity connectors
- Durable exterior jacketing
- Enhanced noise-resistant shielding
- Unique unidirectional design
- Limited Lifetime Warranty
- Available in 1/4" and XLR
- Made in the U.S.A.

PRO STAGE SERIES - 1/4" INSTRUMENT CABLE

AST-B10-SSN	Black 10' Straight to Straight Nickel
AST-B15-SSN	Black 15' Straight to Straight Nickel
AST-B20-SSN	Black 20' Straight to Straight Nickel
AST-B10-RSN	Black 10' Right to Straight Nickel
AST-B15-RSN	Black 15' Right to Straight Nickel
AST-B20-RSN	Black 20' Right to Straight Nickel

PRO STAGE SERIES - XLR CABLE

AST-B20-XLN	Black 20' XLR Nickel
-------------	----------------------

PRO STUDIO SERIES - 1/4" INSTRUMENT CABLE

AST-P10-SSG	Purple 10' Straight to Straight Gold
AST-P15-SSG	Purple 15' Straight to Straight Gold
AST-P20-SSG	Purple 20' Straight to Straight Gold
AST-P10-RSG	Purple 10' Right to Straight Gold
AST-P15-RSG	Purple 15' Right to Straight Gold
AST-P20-RSG	Purple 20' Right to Straight Gold

PRO STUDIO SERIES - XLR CABLE

AST-P20-XLG	Purple 20' XLR Gold
-------------	---------------------

Custom lengths and configurations are available on special order. Please contact a Fishman/Asterope dealer to order.

www.fishman.com/dealers



Steve Earle

Photo Credit: Ted Barron



Ben Jaffe
Preservation Hall Jazz Band



Pat Sheridan
Fit For An Autopsy



James Morrison



Ken Susi
Unearth



Buz McGrath
Unearth



Jason Isbell

Fishman.com

Inside the US: 800.FISHMAN • International: +1 978.988.9199

Fishman, Fluence, TriplePlay, Aura, Loudbox, Loudbox Artist, Loudbox Performer, Ellipse, Acoustic Matrix, Neo-D, Rare Earth Blend, Platinum, BP-100, Full Circle are all trademarks, registered trademarks or tradenames of FISHMAN TRANSDUCERS.

Products listed are covered by one or more of the following U.S. patents: 5670733, 5693898, 6429367, 6677514, 6239349, 6278059, 7247789, 6448488, 1145219, 60047420.8. Other patents may also apply.

©2016 FISHMAN TRANSDUCERS First Printing, January 2016

FISHMAN®