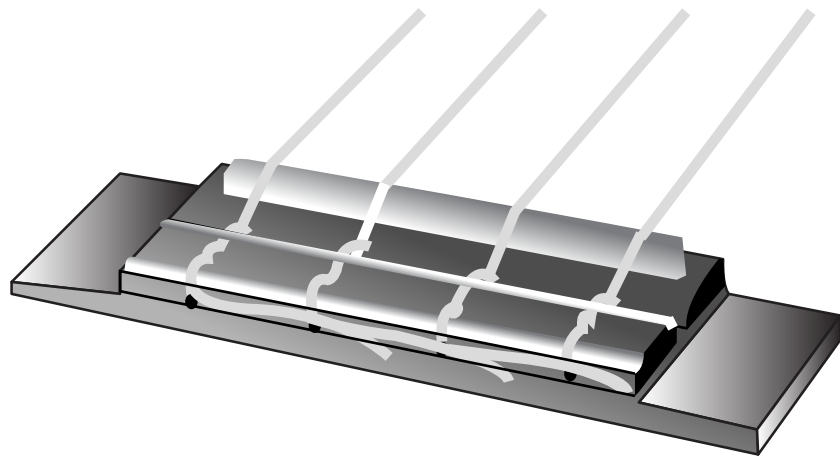


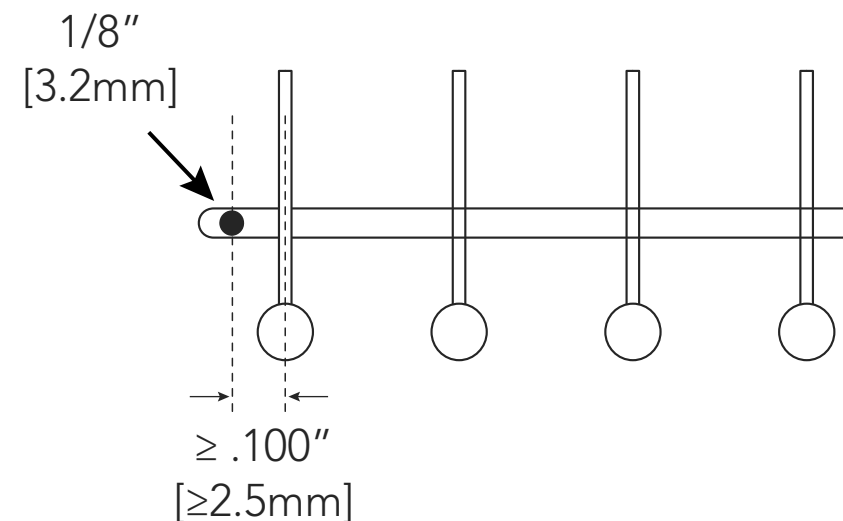
## Step 1: Saddle Slot

Maximum string spacing at saddle: 2.0" (50.8mm).



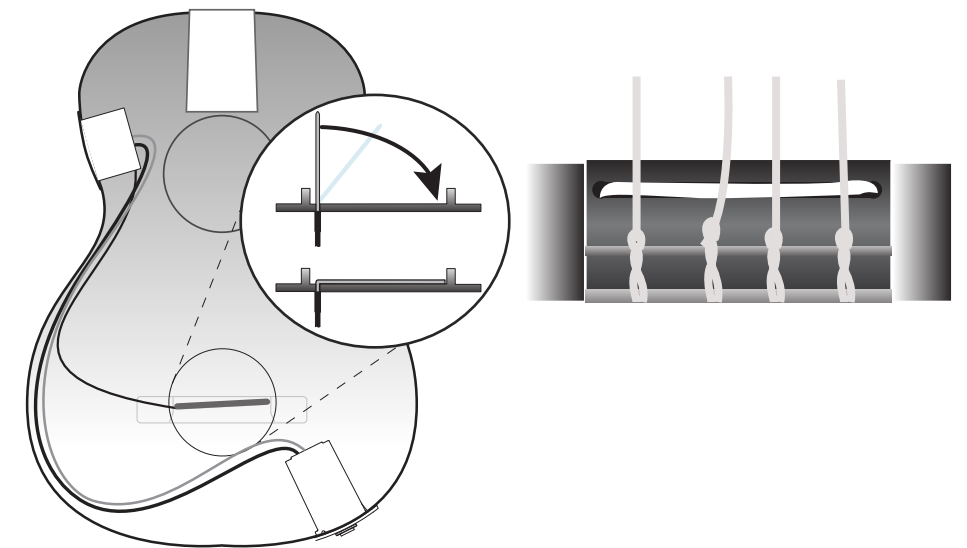
## Step 2: Pickup Wire Hole

Drill 1/8" (3.2mm) hole in the saddle slot for the pickup wire, no less than .100" (2.5mm) from nearest string



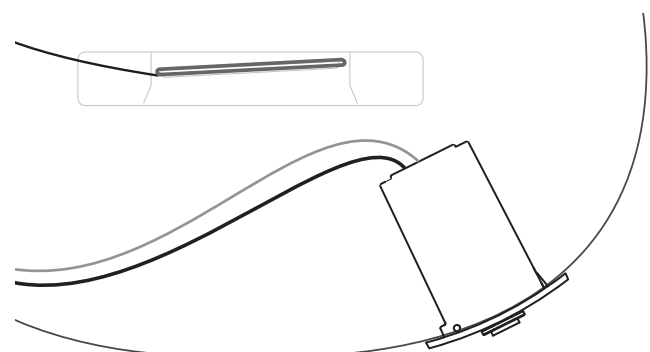
## Step 3: Sonicore Installation

Insert stripped ends of pickup into slot so that when laid flat, the opposite end of pickup lies against slot edge.



## Step 4: Battery Box Installation

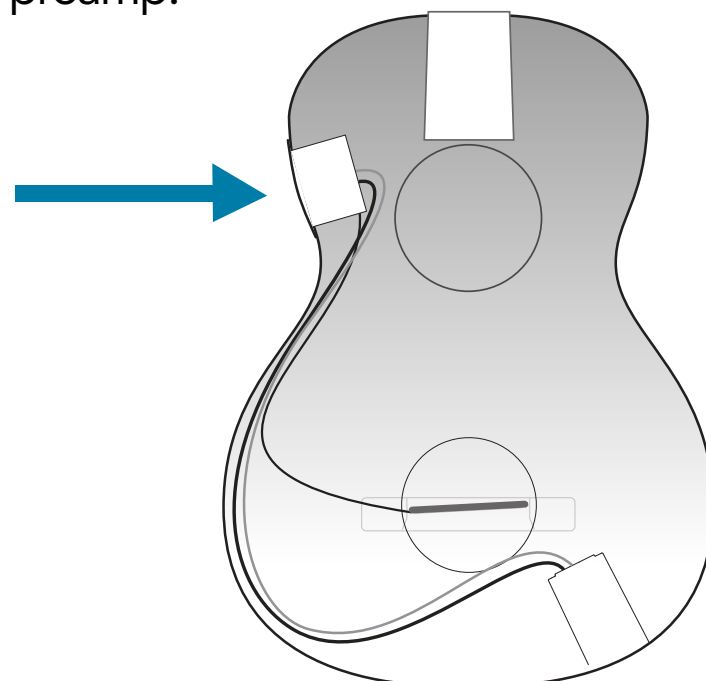
Cut out cavity for output jack/Battery box using supplied template. Drill pilot hole for screws. Install using four mounting screws. (Mounting brackets supplied with 6 volt battery box)



**FISHMAN**®

## Step 5: Locate Preamp

Before cutting cavity on side of instrument, choose a location that allows for proper fit of preamp.



## Step 6 - Install Preamp

Attach pickup wire (signal wire to IN - shield to GND) battery wire and output jack wire to preamp. Install using four screws and mounting brackets.

